

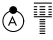
WAAS CH 58208 W01A	APP CRS 011°	Rwy Idg TDZE Apt Elev	9500 1017 1026
---------------------------------	------------------------	-----------------------------	---

RNAV (GPS) Y RWY 1R

KANSAS CITY INTL (MCI)

▼ For uncompensated Baro-VNAV systems, LNAV/VNAV NA below -20°C (-4°F) or above 54°C (130°F). DME/DME RNP-0.3 NA. For inop ALSF, increase LPV Cat E visibility to RVR 4000, LNAV/VNAV Cat E visibility to RVR 5000 and LNAV Cat C/D/E visibility to RVR 5000. Simultaneous approach authorized with Rwy 1L. LNAV procedure NA during simultaneous operations. Use of FD or AP providing RNAV track guidance required during simultaneous operations.

ALSF-2



MISSED APPROACH: Climb to 1500 then climbing right turn to 4000 direct ANX VORTAC and hold.

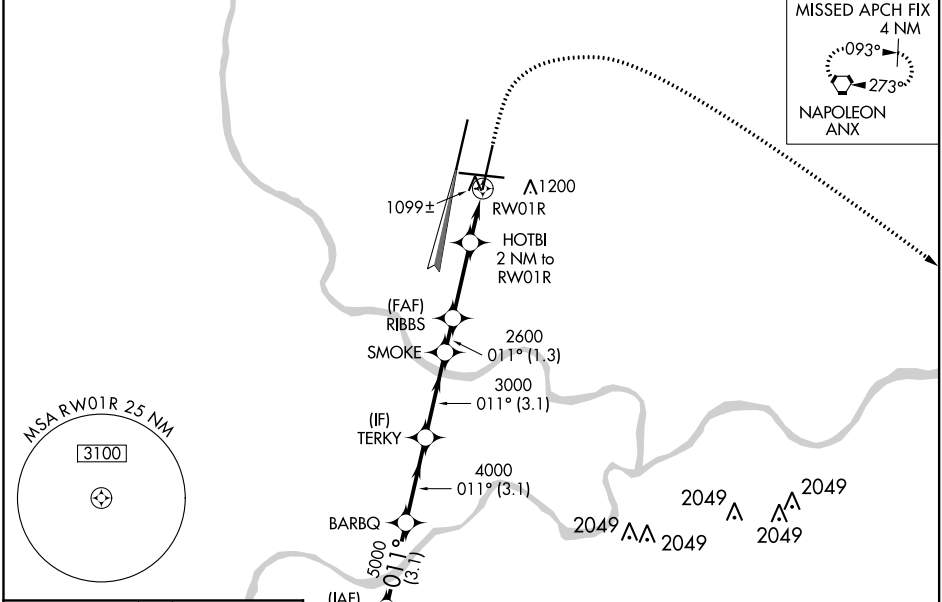
D-ATIS 128.375	KANSAS CITY APP CON 120.95 318.1	INTERNATIONAL TOWER 128.2 254.25	GND CON 121.8	CLNC DEL 135.7	CPDLC
--------------------------	--	--	-------------------------	--------------------------	-------

MISSED APCH FIX
4 NM

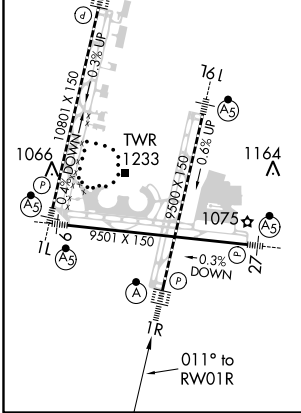


093°
273°

NAPOLEON
ANX



ELEV 1026	D TDZE 1017
HIRL all Rwy's TDZ/CL Rwy's 1L, 1R, 19R and 19L	



SPICY	VGSi and RNAV glidepath not coincident (VGSi Angle 3.00/TCH 74).				
6000	BARBQ	TERKY	SMOKE	RIBBS	HOTBI
5000	4000	3000	2600	2600	2600
GP 3.00°	011°				
TCH 59					
	3.1 NM	3.1 NM	3.1 NM	2.8 NM	1.1 NM
	A	B	C	D	E
LPV DA	1217/18 200 (200-½)				
LNAV/VNAV DA	1327/24 310 (400-½)				
LNAV MDA	1360/24	343 (400-½)	1360/30		343 (400-¾)
CIRCLING	1540-1	514 (600-1)	1540-1½	514 (600-1½)	1580-2 554 (600-2)

NC-3, 07 OCT 2021 to 04 NOV 2021

NC-3, 07 OCT 2021 to 04 NOV 2021