


WAAS CH 56608 W09A	APP CRS 094°	Rwy Idg TDZE Apt Elev	9501 1015 1026
----------------------------------------	------------------------	-----------------------------	-------------------------------------------

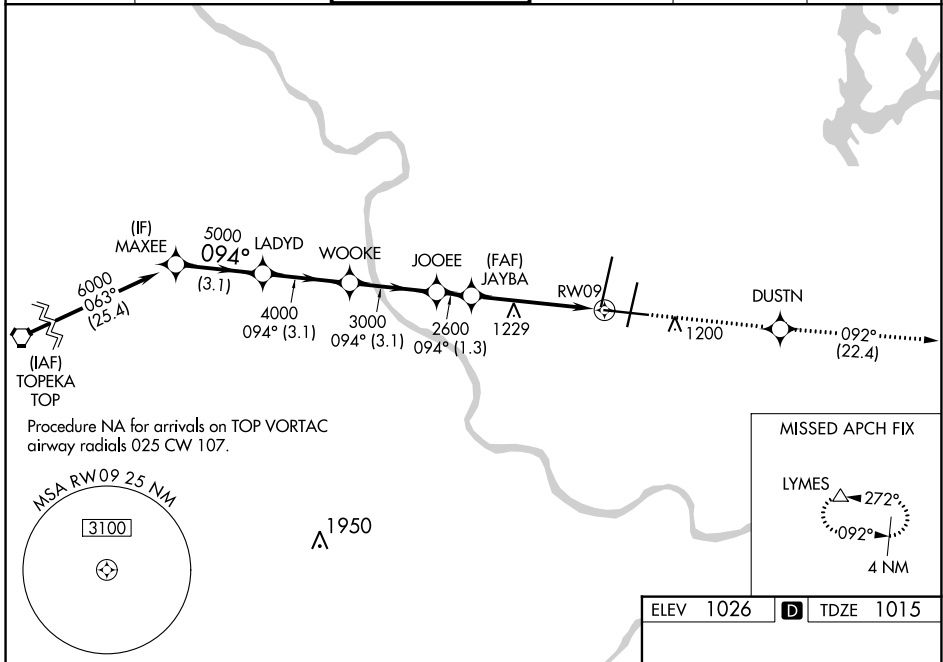
RNAV (GPS) Y RWY 9

KANSAS CITY INTL (MCI)

▽ Inop table does not apply to LPV and LNAV/VNAV.
For uncompensated Baro-VNAV systems, LNAV/VNAV NA below -20°C (-4°F) or above 54°C (130°F). DME/DME RNP-0.3 NA.
For inop MALSR, increase LNAV Cat A/B visibility to RVR 5000 and Cat C/D/E visibility to 1½ mile.

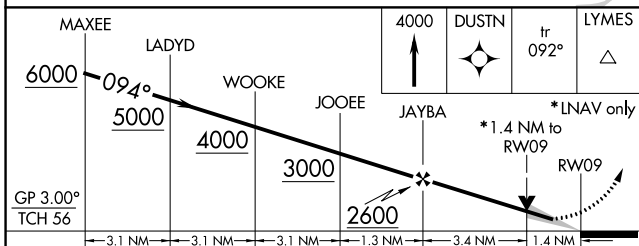
MALSR  MISSED APPROACH: Climb to 4000 direct DUSTN and on track 092° to LYMES and hold.

D-ATIS 128.375	KANSAS CITY APP CON 120.95 318.1	INTERNATIONAL TOWER 128.2 254.25	GND CON 121.8	CLNC DEL 135.7	CPDLC
--------------------------	--------------------------------------------	---------------------------------------------------	-------------------------	--------------------------	-------



NC-3, 07 OCT 2021 to 04 NOV 2021

NC-3, 07 OCT 2021 to 04 NOV 2021



CATEGORY	A	B	C	D	E
LPV DA	1315/50		300 (300-1)		
LNAV/VNAV DA	1320/50		305 (300-1)		
LNAV MDA	1500/40 485 (500-¾)		1500/50 485 (500-1)		
CIRCLING	1540-1 514 (600-1)		1540-1½ 514 (600-1½)		1580-2 554 (600-2)

