

WAAS CH 99617 W32A	APP CRS 326°	Rwy Idg TDZE Apt Elev	6301 1322 1333
--	------------------------	-----------------------------	---

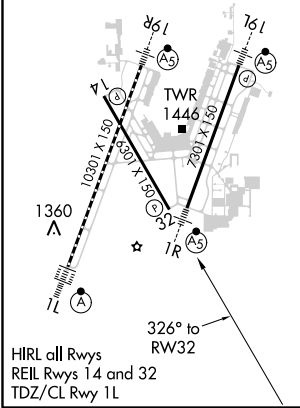
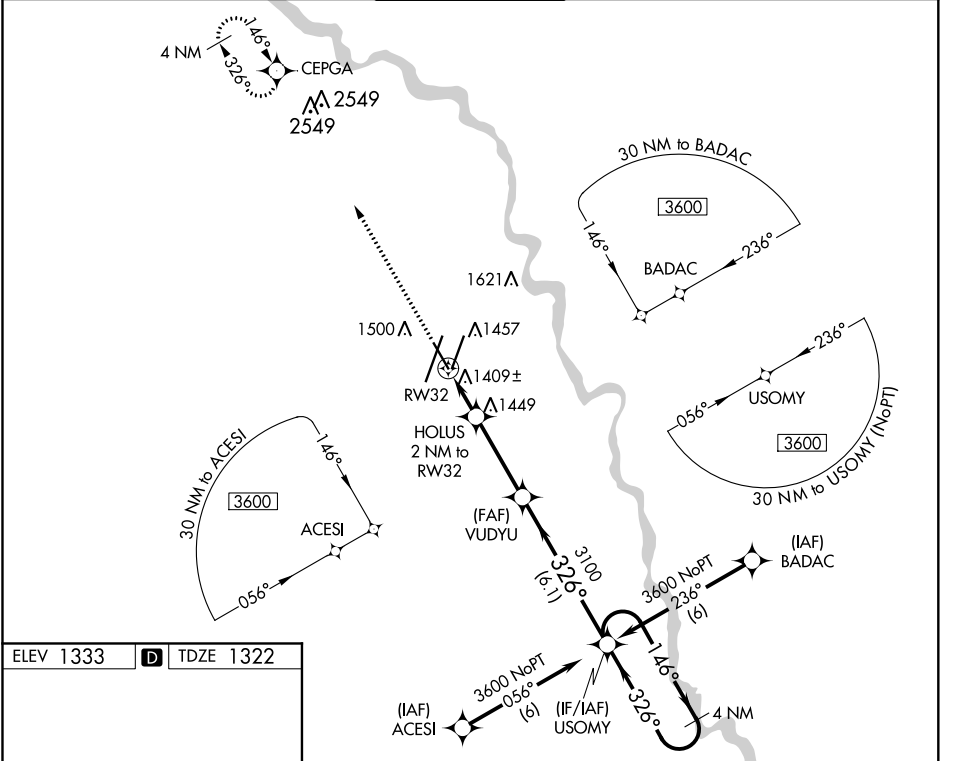
RNAV (GPS) RWY 32

WICHITA DWIGHT D EISENHOWER NTL (ICT)

▼ For uncompensated Baro-VNAV systems, LNAV/VNAV NA below -15°C (5°F) or above 54°C (130°F). DME/DME RNP-0.3 NA.

MISSED APPROACH: Climb to 3600 direct CEPGA and hold.

ATIS 125.15	WICHITA APP CON 126.7 353.5	WICHITA TOWER 118.2 257.8	GND CON 121.9 348.6	CLNC DEL 125.7
-----------------------	---------------------------------------	-------------------------------------	-------------------------------	--------------------------



ELEV 1333	D	TDZE 1322	
3600	CEPGA	USOMY	4 NM Holding Pattern
*LNAV only.			
*1 NM to RWY 32			
*1 NM to RWY 32			
2000*			
3100			
3100			
3600 NoPT (6)			
3600 NoPT (6)			
3600			
GP 3.00°			
TCH 53			
CATEGORY	A	B	C
LPV DA		1572-3/4	250 (300-3/4)
LNAV/VNAV DA		1761-1 1/2	439 (500-1 1/2)
LNAV MDA	1680-1	358 (400-1)	1680-1 1/4 358 (400-1 1/4)
C CIRCLING	1800-1	467 (500-1)	1980-1 3/4 647 (700-1 3/4)
			1980-2 647 (700-2)

NC-2, 07 OCT 2021 to 04 NOV 2021

NC-2, 07 OCT 2021 to 04 NOV 2021