

RNAV (RNP) Z RWY 19R

WICHITA DWIGHT D EISENHOWER NTL (ICT)

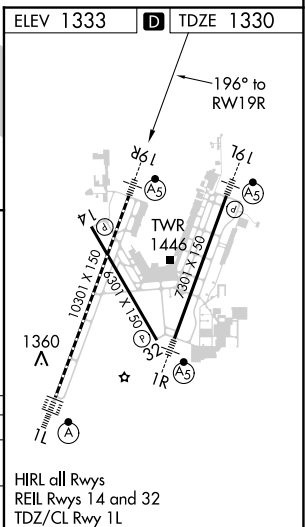
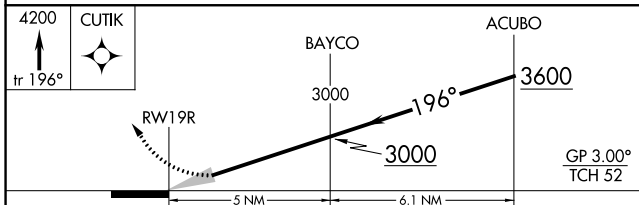
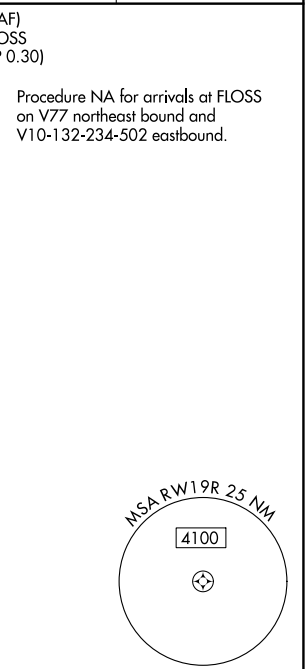
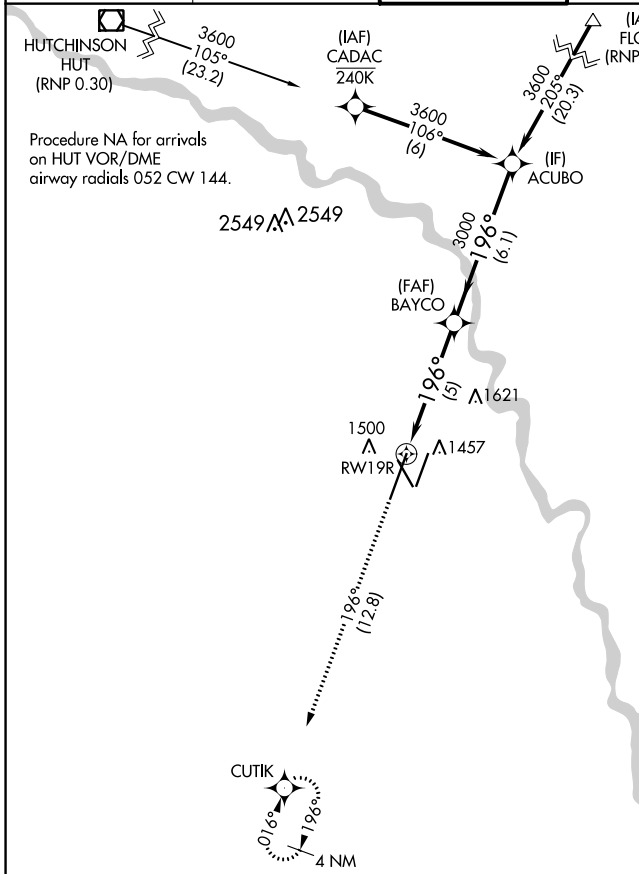
APP CRS	Rwy Idg	10301
196°	TDZE	1330
	Apt Elev	1333

▼ For uncompensated Baro-VNAV systems, procedure NA below -15°C (5°F) or above 54°C (130°F). For inoperative MALS, increase all Cats visibility to 1 ¼ mile. GPS required.

MALS R

MISSED APPROACH: Climb to 4200 on track 196° to CUTIK and hold.

ATIS 125.15	WICHITA APP CON 126.7 353.5	WICHITA TOWER 118.2 257.8	GND CON 121.9 348.6	CLNC DEL 125.7
-----------------------	---------------------------------------	-------------------------------------	-------------------------------	--------------------------



CATEGORY	A	B	C	D
RNP 0.30 DA	1727/50		397 (400-1)	

AUTHORIZATION REQUIRED

NC-2, 07 OCT 2021 to 04 NOV 2021

NC-2, 07 OCT 2021 to 04 NOV 2021