


WAAS CH 63019 W19A	APP CRS 196°	Rwy Idg TDZE 1330 Apt Elev 1333
--	------------------------	---

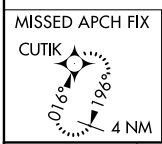
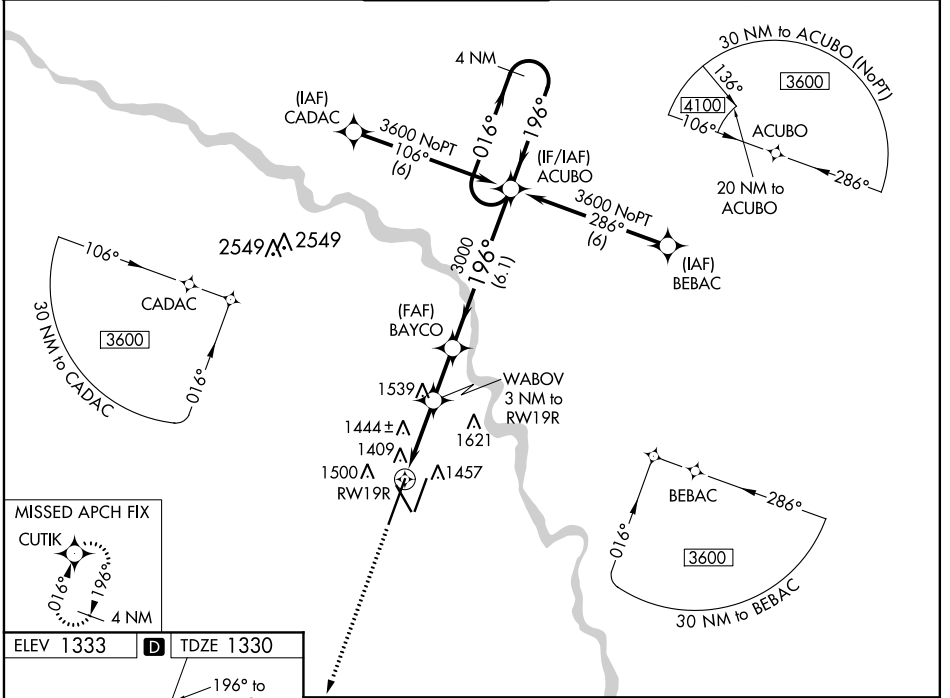
RNAV (GPS) Y RWY 19R

WICHITA DWIGHT D EISENHOWER NTL (ICT)

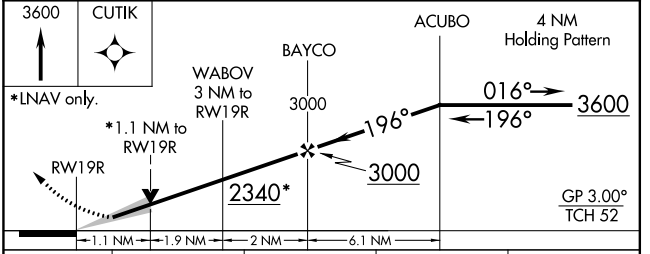
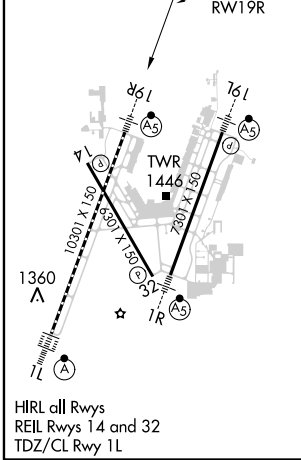
▼ For uncompensated Baro-VNAV systems, LNAV/VNAV NA below -15°C (5°F) or above 54°C (130°F). DME/DME RNP-0.3 NA. For inoperative MALSR, increase LNAV Cat C/D visibility to RVR 6000. # RVR 1800 authorized with use of FD or AP or HUD to DA.

MALSR

MISSED APPROACH: Climb to 3600 direct CUTIK and hold.

ATIS 125.15	WICHITA APP CON 126.7 353.5	WICHITA TOWER 118.2 257.8	GND CON 121.9 348.6	CLNC DEL 125.7
-----------------------	---------------------------------------	-------------------------------------	-------------------------------	--------------------------



ELEV 1333	D	TDZE 1330
-----------	----------	-----------



CATEGORY	A	B	C	D
LPV DA #	1530/24		200 (200-½)	
LNAV/VNAV DA	1742/45		412 (500-¾)	
LNAV MDA	1740/24 410 (500-½)		1740/40 410 (500-¾)	
C CIRCLING	1800-1 467 (500-1)		1980-1¾ 647 (700-1¾) 1980-2 647 (700-2)	

NC-2, 07 OCT 2021 to 04 NOV 2021

NC-2, 07 OCT 2021 to 04 NOV 2021