

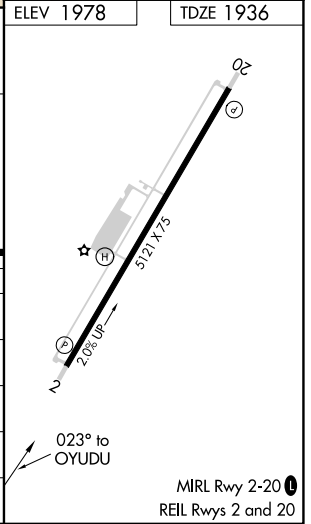
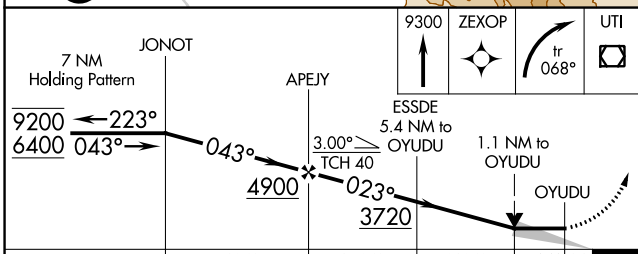
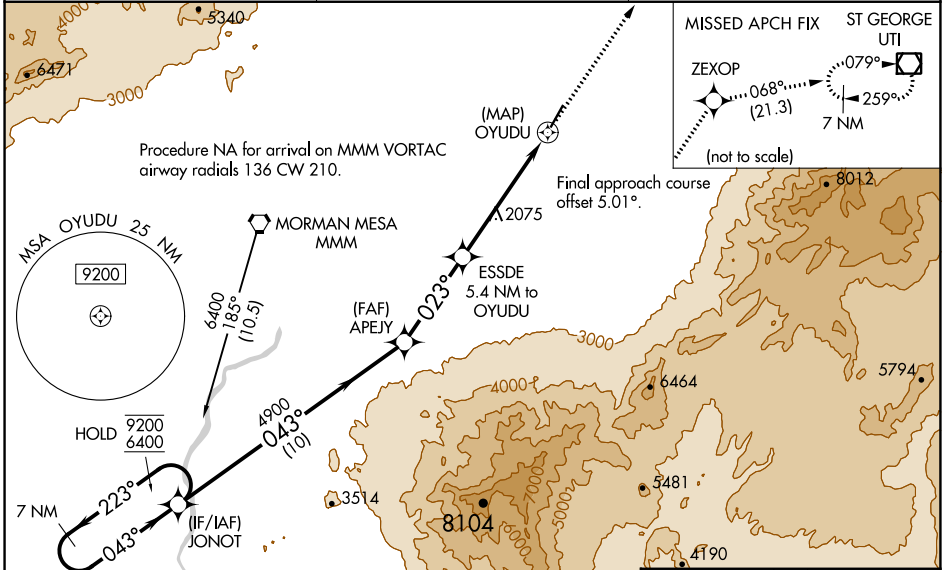
| | | | |
|--|------------------------|-----------------------------|---|
| WAAS CH 69641 W02A | APP CRS 023° | Rwy Idg TDZE Apt Elev | 5121 1936 1978 |
|--|------------------------|-----------------------------|---|

RNAV (GPS) RWY 2

MESQUITE (67L)

| | |
|---|--|
| RNP APCH. | MISSED APPROACH: Climb to 9300 direct ZEXOP and climbing right turn on track 068° to UTI VOR/DME and hold, continue climb-in-hold to 9300. * Missed approach requires minimum climb of 258 feet per NM to 6200. |
| <p>▼ ▲ NA</p> <p>VDP NA when using St George altimeter setting. When local altimeter setting not received, use St. George altimeter setting and increase all MDAs 200 feet and LP* and LNAV* Cats C/D visibility ½ SM. Circling NA for Cat D west of Rwy 2-20. Circling Rwy 20 NA at night.</p> | |

| | | |
|--------------------------|--|---------------------------------|
| AWOS-2 118.525 | LOS ANGELES CENTER 124.2 343.6 | UNICOM 122.8 (CTAF) 0 |
|--------------------------|--|---------------------------------|



| CATEGORY | A | B | C | D |
|-----------|---------------------------------|---------------------------------|------------|-----------------|
| LP MDA* | 2340-1 | 404 (400-1) | 2340-1 1/8 | 404 (400-1 1/8) |
| LP MDA | 3080-1 1/4 1144 (1200-1 1/4) | 3080-1 1/2 1144 (1200-1 1/2) | 3080-3 | 1144 (1200-3) |
| LNAV MDA* | 2340-1 | 404 (400-1) | 2340-1 1/8 | 404 (400-1 1/8) |
| LNAV MDA | 3140-1 1/4 1204 (1200-1 1/4) | 3140-1 1/2 1204 (1200-1 1/2) | 3140-3 | 1204 (1200-3) |
| CIRCLING | 3140-1 1/4 1162 (1200-1 1/4) | 3140-1 1/2 1162 (1200-1 1/2) | 3140-3 | 1162 (1200-3) |

SW-4, 18 MAY 2023 to 15 JUN 2023

SW-4, 18 MAY 2023 to 15 JUN 2023

MIRL Rwy 2-20
REIL Rws 2 and 20