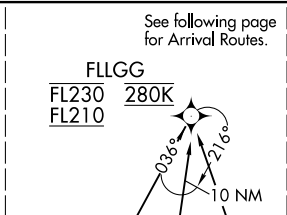


STOCR THREE ARRIVAL (RNAV) Transition Routes

CHARLOTTE APP CON
126.15 282.325
D-ATIS ARR
121.15



CRVET
FL290 280K
FL240

SHLBI
FL290 280K
FL240

CHVEE

MOPPR

CHGR

FFORD

CHECR

CHARLESTON
CHS

PITRW

- NOTE: RADAR required.
- NOTE: RNAV 1.
- NOTE: DME/DME/IRU or GPS required.
- NOTE: Turbojet aircraft only.

NOTE: Expect "descend via" clearance and landing direction assignment (north or south) by ARTCC.

For vertical navigation planning, landing south, select Rwy 23, landing north, select Rwy 36R.

NOTE: Descend via mach number until intercepting 280K. Maintain 280K until slowed by the STAR or assigned by ATC.

NOTE: CLT approach will assign landing runway.

NOTE: Chart not to scale.

CHARLESTON TRANSITION (CHS.STOCR3)

CHECR TRANSITION (CHECR.STOCR3)

PITRW TRANSITION (PITRW.STOCR3)

(CONTINUED ON FOLLOWING PAGES)