

# TACAN Y RWY 14

TACAN RIV Chan <b>77</b>	APCH CRS <b>106°</b>	Rwy ldg <b>13,302</b> TDZE <b>1536</b> Arpt Elev <b>1536</b>
--------------------------	----------------------	--

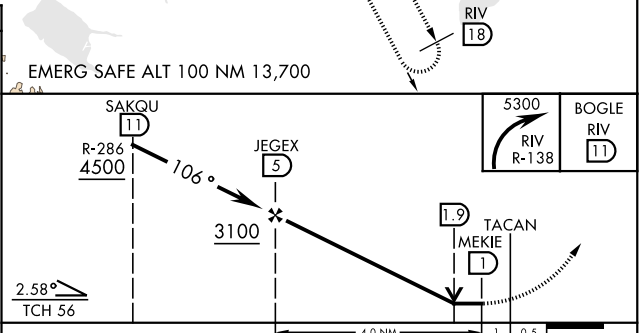
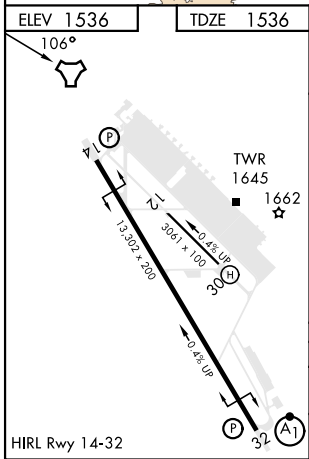
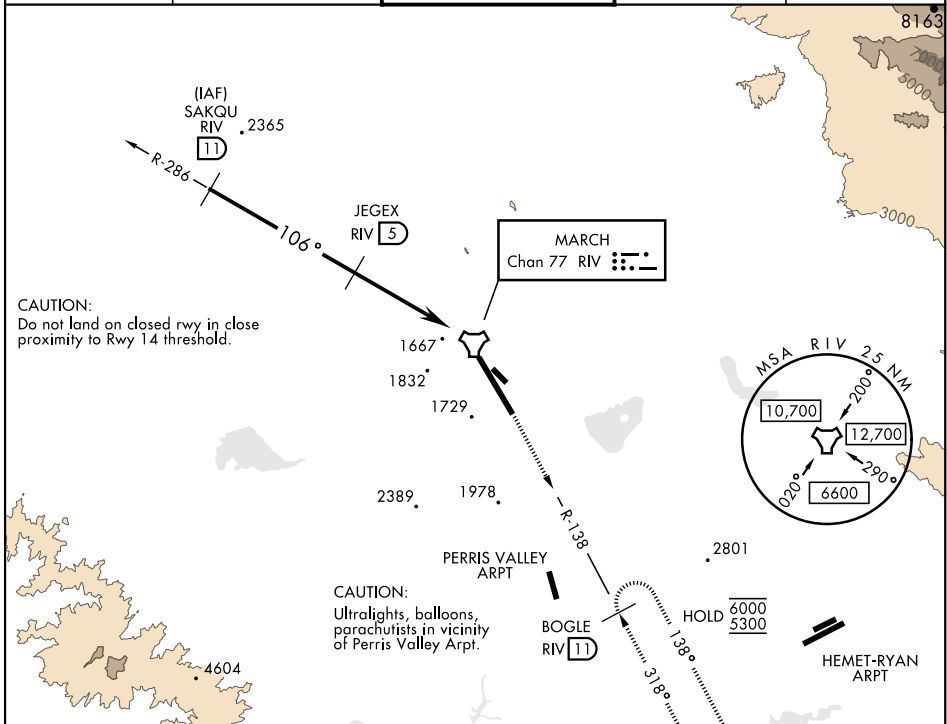
AL-348 [USAF]

MARCH ARB (KRIV)

**⚠** \* Circling not authorized NE of Rwy 14-32. Rapid rising terrain.

MISSED APPROACH: Climb out RIV TACAN R-138 direct BOGLE, continue to climb in hold to 5300.

ATIS <b>134.75 239.05</b>	APP/DEP CON ★ <b>133.5 306.975</b>	TOWER <b>127.65 253.5</b>	GND CON <b>121.75 335.8</b>	CLNC DEL <b>127.775 268.7</b>
---------------------------	------------------------------------	---------------------------	-----------------------------	-------------------------------



CATEGORY	A	B	C	D	E
S-14	2260-17/8 724 (800-17/8)		2260-2 724 (800-2)		
<b>CIRCLING*</b>	2260-17/8 724 (800-17/8)	2260-17/8 724 (800-17/8)	2300-2 1/4 764 (800-2 1/4)	2440-3 904 (1000-3)	2840-3 1304 (1400-3)

# TACAN Y RWY 14

SW-3, 21 MAR 2024 to 18 APR 2024

SW-3, 21 MAR 2024 to 18 APR 2024