

# EXECUTIVE ONE DEPARTURE (RNAV)

SE-2, 13 JUN 2024 to 11 JUL 2024

## DEPARTURE ROUTE DESCRIPTION

**TAKEOFF RUNWAY 4:** Climb heading 037° to 520 MSL, then left turn direct RNDAH, cross RNDAH at or above 2000, direct GECE and then on depicted route to PLFMD, thence. . . .

**TAKEOFF RUNWAY 9:** Climb heading 094° to 520 MSL, then right turn direct RNDAH, cross RNDAH at or above 2000, direct GECE and then on depicted route to PLFMD, thence. . . .

**TAKEOFF RUNWAY 22:** Climb heading 217° to 520 MSL, then right turn direct RNDAH, cross RNDAH at or above 2000, direct GECE and then on depicted route to PLFMD, thence. . . .

**TAKEOFF RUNWAY 27:** Climb heading 274° to 520 MSL, then direct RNDAH, cross RNDAH at or above 2000, direct GECE and then on depicted route to PLFMD, thence. . . .

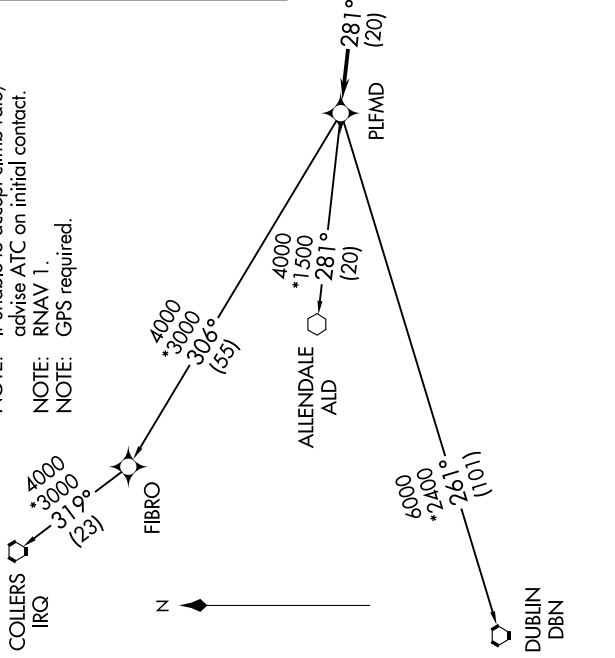
. . . via assigned transition, maintain 2000. Expect clearance to filed altitude/flight level within ten (10) minutes after departure.

ALLEDALE TRANSITION (EXTVE1.ALD)  
COLLIERS TRANSITION (EXTVE1.IRQ)  
DUBLIN TRANSITION (EXTVE1.DBN)

**TAKEOFF MINIMUMS**  
Rwy 4: ATC climb of 500' per NM to 900.  
Rwy 9: ATC climb of 500' per NM to 800.  
Rwy 22: Standard with minimum climb of 245' per NM to 520. ATC climb of 500' per NM to 1300.  
Rwy 27: ATC climb of 500' per NM to 1500.

AWOS-3 123.775  
CLNC DEL 119.85  
CTAF 122.8  
CHARLESTON DEP CON 120.7 306.925

NOTE: Transponder code will be issued by Charleston clearance delivery.  
NOTE: If unable to accept climb rate, advise ATC on initial contact.  
NOTE: RNAV 1.  
NOTE: GPS required.



NOTE: Chart not to scale.

# EXECUTIVE ONE DEPARTURE (RNAV)

SE-2, 13 JUN 2024 to 11 JUL 2024