

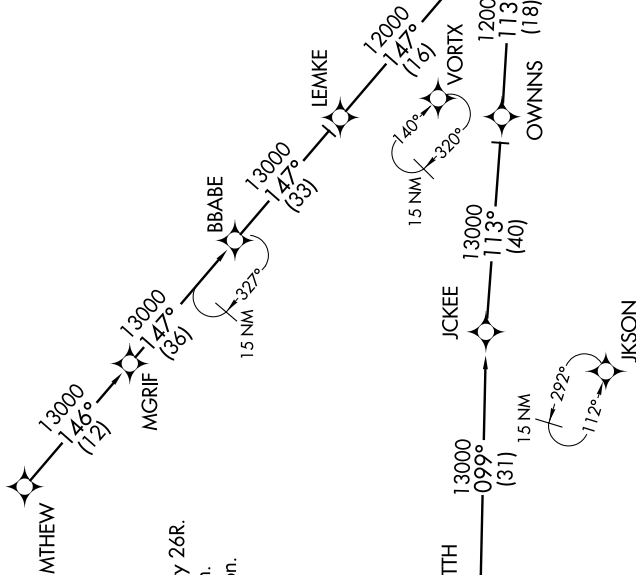
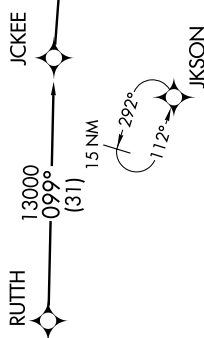
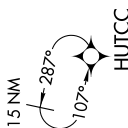
CHPPR ONE ARRIVAL (RNAV) Transition Routes

SE-4, 11 JUL 2024 to 08 AUG 2024

D-ATIS ARR  
119.65  
ATLANTA APP CON  
128.0 379.9



- NOTE: RADAR required.
- NOTE: RNAV 1.
- NOTE: DME/DME/IRU or GPS required.
- NOTE: Turbojet aircraft only.
- NOTE: Landing east select Rwy 8L, landing west select Rwy 26R.
- NOTE: Landing Rwy 9R: Select DFINS approach transition.
- NOTE: Landing Rwy 9L: Select AAKAY approach transition.



See following page for Arrival Routes.

CHPPR 13000  
Landing east:  
Expect 250K

(CONTINUED ON FOLLOWING PAGES)

NOTE: Chart not to scale.

SE-4, 11 JUL 2024 to 08 AUG 2024