

LOC/DME I-PKU 111.75 Chan 54 (Y)	APP CRS 275°	Rwy ldg TDZE Apt Elev 9000 998 1026
--	------------------------	---

ILS RWY 28 (SA CAT I)

HARTSFIELD-JACKSON ATLANTA INTL (ATL)

RNAV 1-GPS or RADAR required for procedure entry.
From TERII: RNAV 1-GPS required. DME or RADAR required.

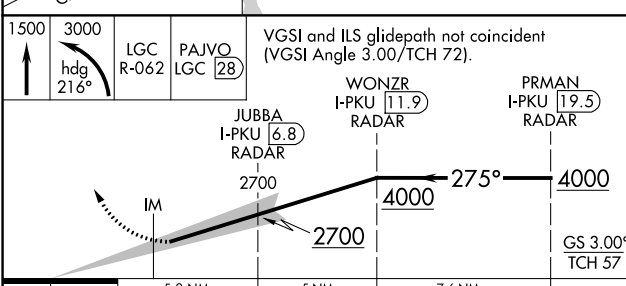
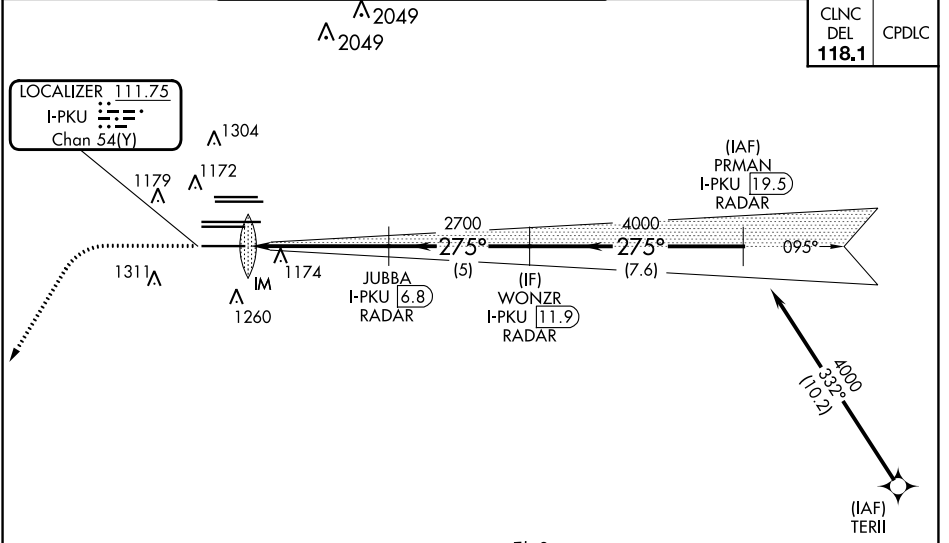
ALSIF-2

MISSED APPROACH: Climb to 1500 then climbing left turn to 3000 on heading 216° and LGC VORTAC R-062 to PAJVO/LGC 28 DME/RADAR and hold.

Simultaneous approach authorized.
Requires specific OPSPEC, MSPEC, or LOA approval.

D-ATIS ARR 119.65	ATLANTA APP CON	ATLANTA TOWER				ALL RWYS	GND CON	ALL RWYS
DEP 125.55	127.9 379.9	8L-26R	8R-26L	9L-27R	9R-27L	10-28	(8L-26R,8R-26L) (9L-27R,9R-27L)	10-28
		119.1 125.325 123.85	119.3 119.5 254.4				121.9 121.75	121.65 254.4

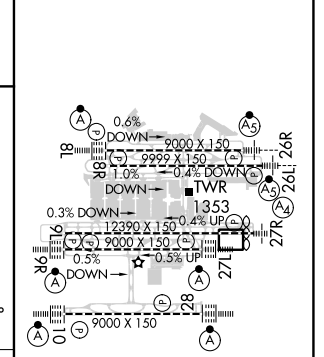
CLNC DEL 118.1	CPDLC
-----------------------------	-------



CATEGORY	A	B	C	D
S-ILS 28	RA 264/14		150 DA 1148	

SA CATEGORY I ILS - SPECIAL AIRCREW & AIRCRAFT CERTIFICATION REQUIRED

ELEV 1026	TDZE 998
-----------	----------



HIRL all Rwys
TDZ/CL Rwys 8L, 9R,
10, 26R, 27L and 28

SE-4, 11 JUL 2024 to 08 AUG 2024

SE-4, 11 JUL 2024 to 08 AUG 2024