

LOC/DME I-HFW <b>109.3</b> Chan <b>30</b>	APP CRS <b>095°</b>	Rwy Idg <b>8800</b> TDZE <b>1015</b> Apt Elev <b>1026</b>
---	------------------------	---

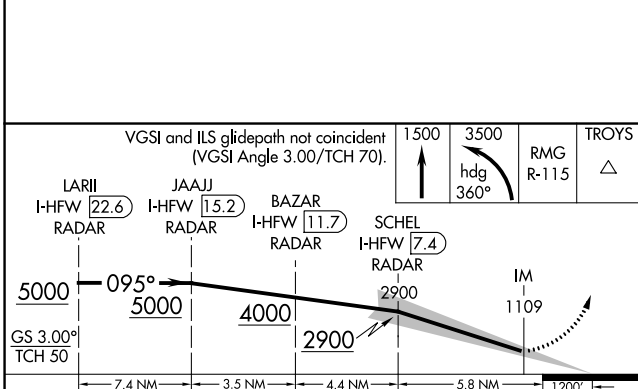
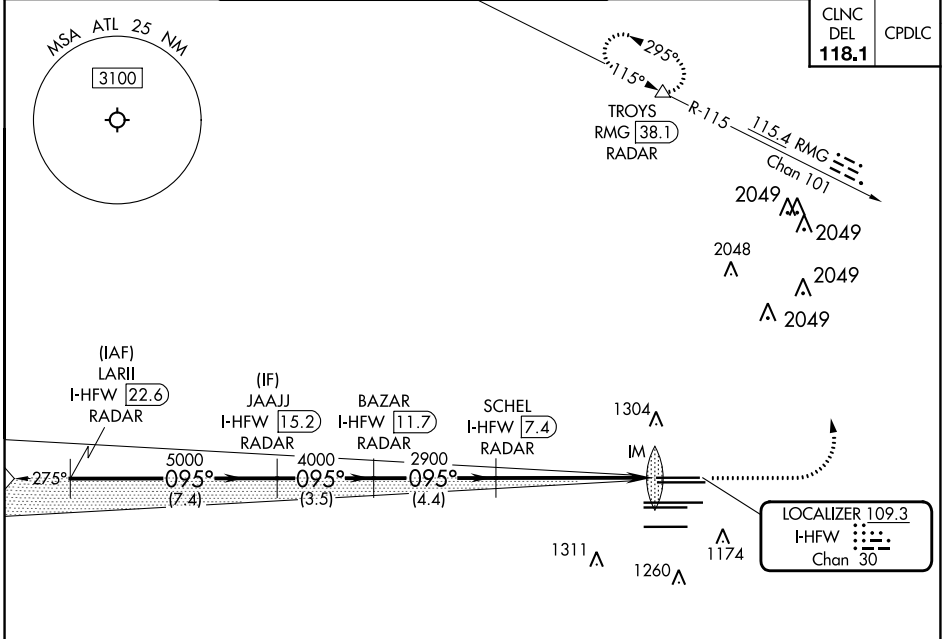
# ILS RWY 8L (CAT II & III)

HARTSFIELD-JACKSON ATLANTA INTL (ATL)

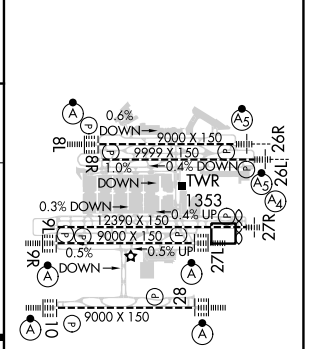
RADAR required for procedure entry. DME or RADAR required. **ALSIF-2** MISSED APPROACH: Climb to 1500 then climbing left turn to 3500 on heading 360° and RMG VORTAC R-115 to TROYS/RMG 38.1 DME/RADAR and hold.

Simultaneous approach authorized.

D-ATIS ARR <b>119.65</b>	ATLANTA APP CON	ATLANTA TOWER	ALL RWYS	GND CON	ALL RWYS
DEP <b>125.55</b>	<b>127.9 379.9</b>	<b>8L-26R 8R-26L 9L-27R 9R-27L 10-28</b>	<b>119.1 125.325 123.85 119.3 119.5 254.4</b>	<b>121.9 121.75 121.65 254.4</b>	



ELEV 1026	TDZE 1015
-----------	-----------



CATEGORY	A	B	C	D
S-ILS 8L	CAT II RA 105/12 100 DA 1115			
S-ILS 8L	CAT III RVR 06			

## CATEGORY II & III ILS SPECIAL AIRCREW & AIRCRAFT CERTIFICATION REQUIRED

HIRL all Rwys  
TDZ/CL Rwys 8L, 9R, 10, 26R, 27L and 28

SE-4, 11 JUL 2024 to 08 AUG 2024

SE-4, 11 JUL 2024 to 08 AUG 2024