

LOC/DME I-ATL 109.9 Chan 36	APP CRS 095°	Rwy Idg TDZE Apt Elev	8R 9999 8800 1024 1015 1026 1026	8L 8800 1015 1026
---	------------------------	-----------------------------	--	---

ILS or LOC RWY 8R

HARTSFIELD-JACKSON ATLANTA INTL (ATL)

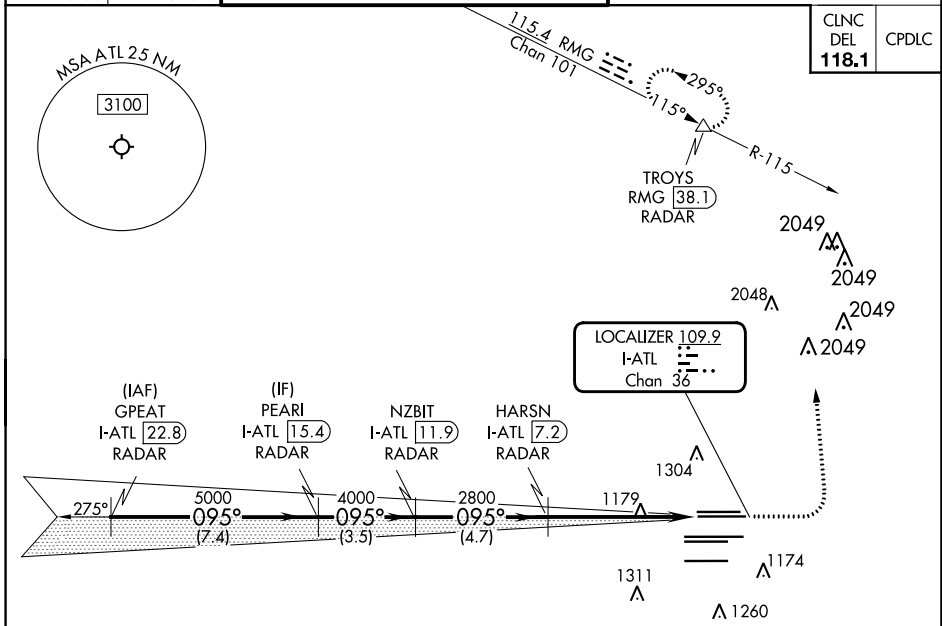
RADAR required for procedure entry.
DME or RADAR required.

Simultaneous approach authorized. Sidestep 8L for inop ALSF-2, increase Cat E visibility to 2.



MISSED APPROACH: Climb to 1500 then climbing left turn to 3500 on heading 360° and RMG VORTAC R-115 to TROYS/RMG 38.1 DME/RADAR and hold.

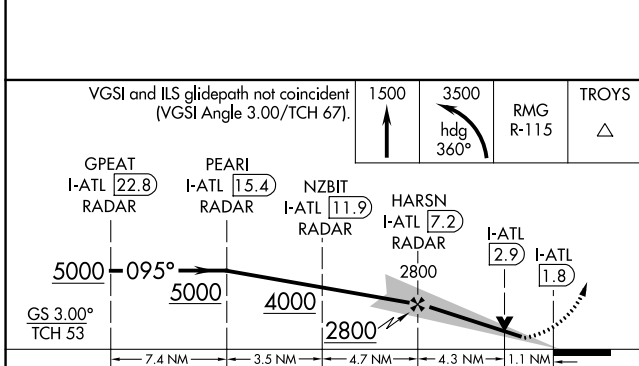
D-ATIS ARR 119.65	ATLANTA APP CON 127.9 379.9	ATLANTA TOWER 8L-26R 8R-26L 9L-27R 9R-27L 10-28 RWYS				ALL RWYS	GND CON (8L-26R,8R-26L) (9L-27R,9R-27L) 10-28	ALL RWYS	
DEP 125.55	127.9 379.9	119.1	125.325	123.85	119.3	119.5 254.4	121.9	121.75	121.65 254.4



CINCL DEL	CPDLC
118.1	

SE-4, 11 JUL 2024 to 08 AUG 2024

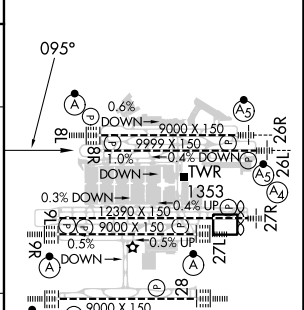
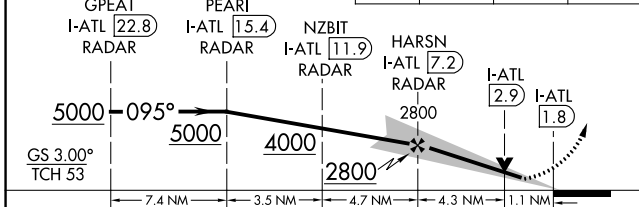
SE-4, 11 JUL 2024 to 08 AUG 2024



ELEV 1026	TDZE 8R 1024	TDZE 8L 1015
-----------	--------------	--------------

VGSI and ILS glidepath not coincident (VGSI Angle 3.00/TCH 67).

1500 3500 RMG R-115 TROYS



CATEGORY	A	B	C	D	E
S-ILS 8R	1282/40		258 (300-¾)		
S-LOC 8R	1440/55	416 (500-1)	1440/60 416 (500-1½)		
SIDESTEP 8L	1440/55	425 (500-1)	1440/60 425 (500-1½)	1440-1½	425 (500-1½)

HIRL all Rwys TDZ/CL Rws 8L, 9R, 10, 26R, 27L and 28					
FAF to MAP 5.4 NM					
Knots	60	90	120	150	180
Min:Sec	5:24	3:36	2:42	2:10	1:48