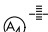


WAAS CH 70400 W27B	APP CRS 275°	Rwy Idg 11890 TDZE 985 Apt Elev 1026
--	------------------------	---

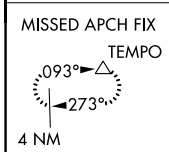
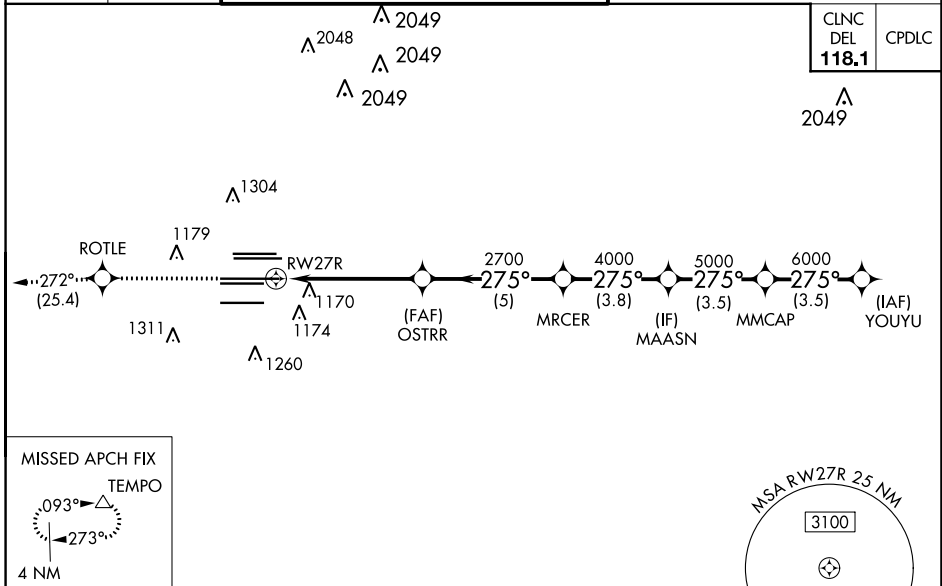
RNAV (GPS) RWY 27R

HARTSFIELD-JACKSON ATLANTA INTL (ATL)

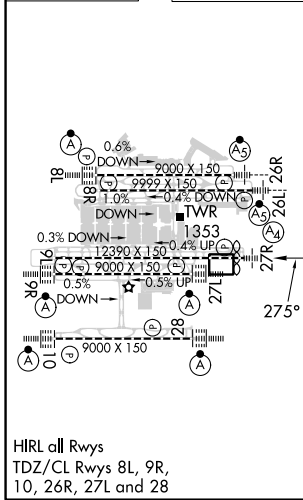
▼ For uncompensated Baro-VNAV systems, LNAV/VNAV NA below -7°C (20°F) or above 54°C (130°F). Simultaneous approach authorized with Rwy 26R or 26L or 28, or Rwy 26R and 28. DME/DME RNP-0.3 NA. For inop MALS, increase LNAV/VNAV Cat D visibility and LNAV Cats C and D visibility ¼ mile. LNAV procedure NA during simultaneous operations. Use of FD or AP providing RNAV track guidance required during simultaneous operations. Inop table does not apply to LPV, all Cats.

MALS

 MISSED APPROACH: Climb to 4000 direct ROTLE and on track 272° to TEMPO and hold.

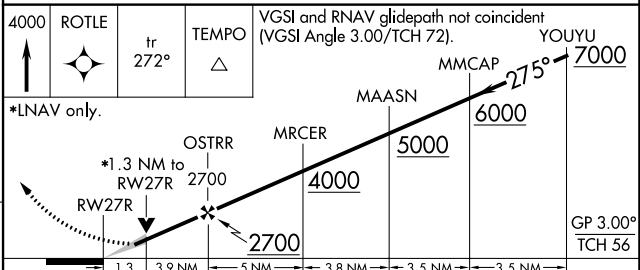
D-ATIS ARR 119.65	ATLANTA APP CON	ATLANTA TOWER					ALL RWYS	GND CON	ALL RWYS		
DEP 125.55	127.9 379.9	8L-26R	8R-26L	9L-27R	9R-27L	10-28	(8L-26R,8R-26L)	(9L-27R,9R-27L)	10-28		
		119.1	125.325	123.85	119.3	119.5	254.4	121.9	121.75	121.65	254.4



ELEV 1026	D	TDZE 985
-----------	----------	----------



HIRL all Rwy
 TDZ/CL Rwy 8L, 9R,
 10, 26R, 27L and 28



CATEGORY	A	B	C	D
LPV DA		1185/40	200 (200-¾)	
LNAV/VNAV DA		1461-1⅓	476 (500-1⅓)	
LNAV MDA	1460/40	475 (500-¾)	1460/60	475 (500-1¼)

SE-4, 11 JUL 2024 to 08 AUG 2024

SE-4, 11 JUL 2024 to 08 AUG 2024