

WAAS CH <b>62800</b> <b>W09D</b>	APP CRS <b>095°</b>	Rwy Idg TDZE <b>1019</b> Apt Elev <b>1026</b>	<b>11730</b>
--	------------------------	---	--------------

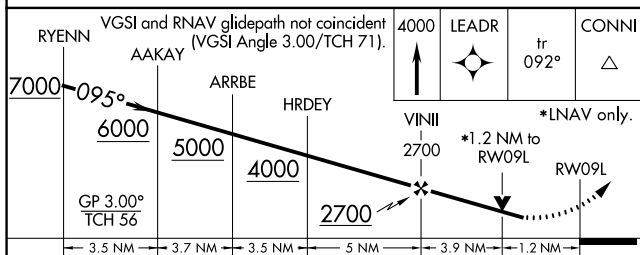
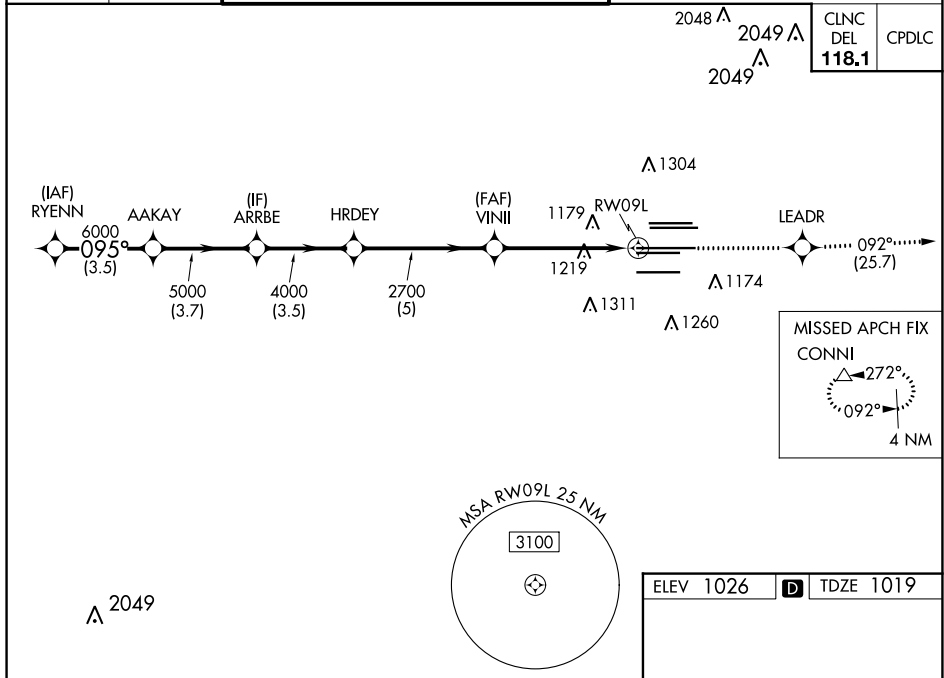
# RNAV (GPS) RWY 9L

HARTSFIELD-JACKSON ATLANTA INTL (ATL)

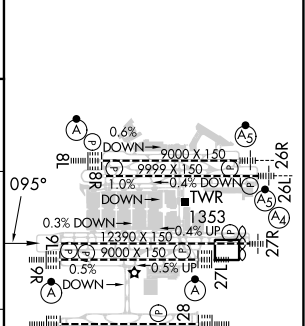
**RNP APCH.**  
 ▼ For uncompensated Baro-VNAV systems, LNAV/VNAV NA below -7°C or above 54°C. Rwy 9L helicopter visibility reduction below RVR 4000 NA. Simultaneous approach authorized with Rwy 8L or 8R or 10, or Rwy 8L and 10. LNAV procedure NA during simultaneous operations. Use of FD or AP providing RNAV track guidance required during simultaneous operations.

MISSED APPROACH: Climb to 4000 direct LEADR and on track 092° to CONNI and hold.

D-ATIS ARR <b>119.65</b>	ATLANTA APP CON	ATLANTA TOWER					ALL RWYS	GND CON	ALL RWYS
DEP <b>125.55</b>	<b>127.9 379.9</b>	8L-26R	8R-26L	9L-27R	9R-27L	10-28	(8L-26R,8R-26L)	(9L-27R,9R-27L)	10-28
		<b>119.1</b>	<b>125.325</b>	<b>123.85</b>	<b>119.3</b>	<b>119.5</b>	<b>121.9</b>	<b>121.75</b>	<b>121.65 254.4</b>



ELEV 1026	<b>D</b>	TDZE 1019
-----------	----------	-----------



CATEGORY	A	B	C	D
LPV DA		1359/50	340 (400-1)	
LNAV/VNAV DA		1405/60	386 (400-1¼)	
LNAV MDA	1480/55	461 (500-1)	1480-1¾	461 (500-1¾)

HIRL dll Rwys  
 TDZ/CL Rwys 8L, 9R,  
 10, 26R, 27L and 28

SE-4, 11 JUL 2024 to 08 AUG 2024

SE-4, 11 JUL 2024 to 08 AUG 2024