

RNAV (GPS) PRM RWY 27L (SIMULTANEOUS CLOSE PARALLEL) HARTSFIELD-JACKSON ATLANTA INTL (ATL)

WAAS CH 65700 W27A	APP CRS 275°	Rwy Idg 8865 TDZE 999 Apt Elev 1026
--	------------------------	--

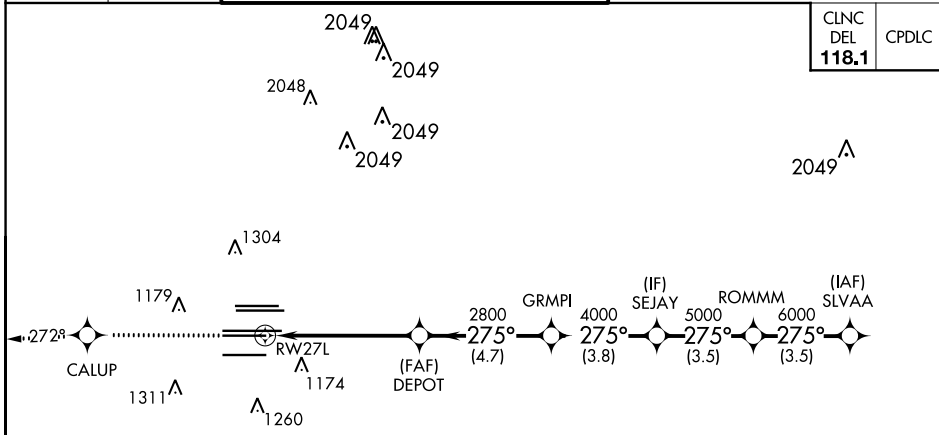
For uncompensated Baro-VNAV systems, LNAV/VNAV NA below -7°C (20°F) or above 54°C (130°F). DME/DME RNP-0.3 NA. Simultaneous close parallel approach authorized with ILS PRM and RNAV PRM Rwy 26R or 26L or 28, or Rwys 26R and 28, or Rwys 26L and 28. Dual VHF Comm required. Use of FD or AP providing RNAV track guidance required during simultaneous operations. See additional requirements on AAUP.

ALSF-2

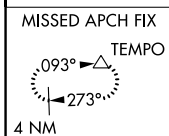


MISSED APPROACH: Climb to 4000 direct CALUP and on track 272° to TEMPO and hold.

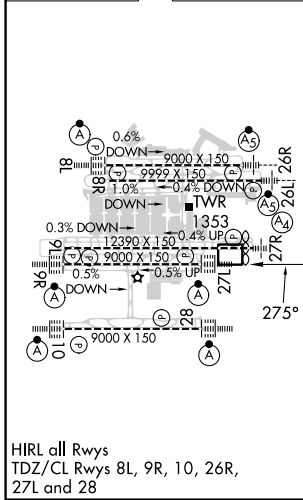
D-ATIS ARR 119.65 DEP 125.55	ATLANTA APP CON 127.9 379.9	ATLANTA TOWER 8L-26R 8R-26L 9L-27R 9R-27L 10-28 RWYS 119.1 125.325 123.85 119.3 119.5 254.4 PRM 132.55	ALL RWYS (8L-26R, 8R-26L) (9L-27R, 9R-27L) 10-28 121.9 121.75 121.65 254.4
--	--	---	--



CINC DEL 118.1	CPDLC
-----------------------------	-------



ELEV 1026	D	TDZE 999
-----------	----------	----------



RADAR REQUIRED

MSA RW27L 25 NM
3100

4000 CALUP tr 272° TEMPO VGSI and RNAV glidepath not coincident (VGSI Angle 3.00/TCH 79).

4000	CALUP	tr 272°	TEMPO	7000
DEPOT 2800	GRMPI 4000	SEJAY 5000	ROMMM 6000	SLVAA 7000
GP 3.00° TCH 58				
-5.5 NM - 4.7 NM - 3.8 NM - 3.5 NM - 3.5 NM-				

CATEGORY	A	B	C	D
LPV DA	1199/18		200 (200-½)	
LNAV/VNAV DA	1528-1⅓		529 (600-1⅓)	

RNAV (GPS) PRM RWY 27L (SIMULTANEOUS CLOSE PARALLEL)

SE-4, 11 JUL 2024 to 08 AUG 2024

SE-4, 11 JUL 2024 to 08 AUG 2024