

ATLANTA, GEORGIA

AL-26 (FAA)

24137

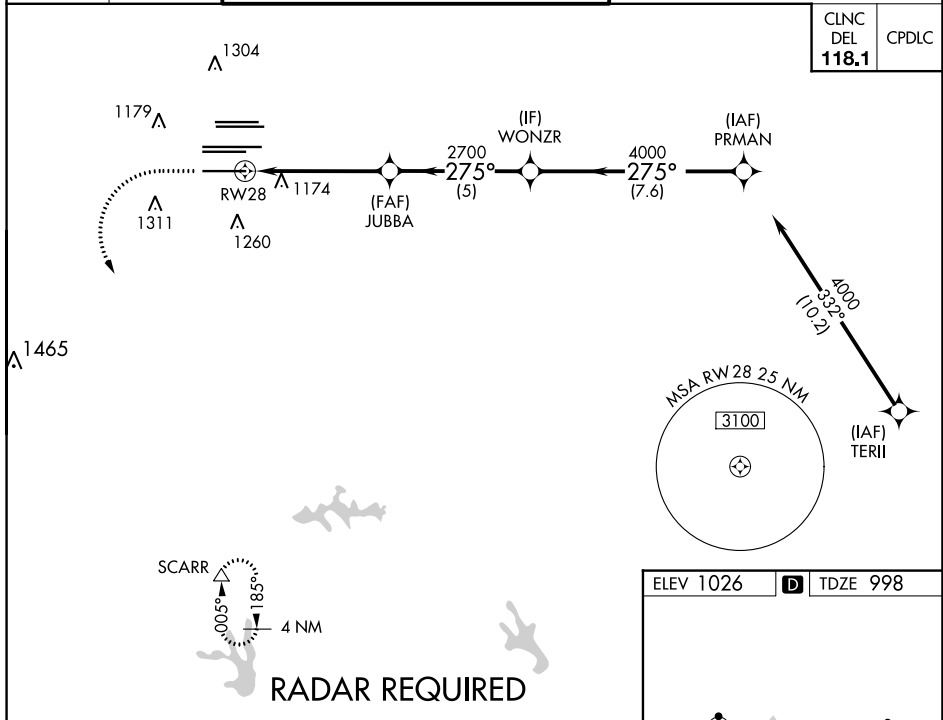
# RNAV (GPS) PRM Y RWY 28 (SIMULTANEOUS CLOSE PARALLEL) HARTSFIELD-JACKSON ATLANTA INTL (ATL)

WAAS CH <b>61299</b> <b>W28A</b>	APP CRS <b>275°</b>	Rwy Idg TDZE <b>998</b> Apt Elev <b>1026</b>	<b>9000</b>
--	------------------------	--	-------------

For uncompensated Baro-VNAV systems, LNAV/VNAV NA below -7°C (20°F) or above 54°C (130°F). DME/DME RNP-0.3 NA. Simultaneous close parallel approach authorized with ILS PRM and RNAV PRM Rwy 26R or 26L or 27R or 27L, or Rwy 26R and 27R, or Rwy 26R and 27L, or Rwy 26L and 27R, or Rwy 26L and 27L. Use of FD or AP providing RNAV track guidance required during simultaneous operations. Dual VHF Comm required. See additional requirements on AAUP.

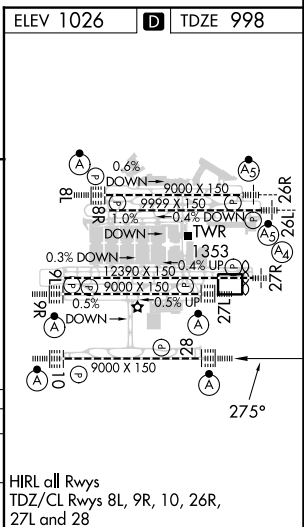
ALSF-2  
MISSED APPROACH: Climb to 1500 then climbing left turn to 3000 direct SCARR and hold.

D-ATIS ARR <b>119.65</b> DEP <b>125.55</b>	ATLANTA APP CON <b>127.9 379.9</b>	ATLANTA TOWER 8L-26R 8R-26L 9L-27R 9R-27L 10-28 RWYS <b>119.1 125.325 123.85 119.3 119.5 254.4</b> PRM <b>133.425</b>	ALL RWYS (8L-26R,8R-26L) (9L-27R,9R-27L) 10-28 RWYS <b>121.9 121.75 121.65 254.4</b>
--	---------------------------------------	--	--



**RADAR REQUIRED**

1500	3000	SCARR	
↑	↘	△	
	JUBBA	WONZR	PRMAN
	2700	4000	4000
		275°	
		2700	GP 3.00° TCH 57'
	5.2 NM	5 NM	7.6 NM
CATEGORY	A	B	C
LPV DA		1198/18	200 (200-½)
LNAV/VNAV DA		1250/24	252 (300-½)



ATLANTA, GEORGIA Orig-A 12OCT17 33°38'N-84°26'W HARTSFIELD-JACKSON ATLANTA INTL (ATL)  
**RNAV (GPS) PRM Y RWY 28 (SIMULTANEOUS CLOSE PARALLEL)**

SE-4, 11 JUL 2024 to 08 AUG 2024

SE-4, 11 JUL 2024 to 08 AUG 2024