

APP CRS	Rwy Idg	<b>9000</b>
<b>095°</b>	TDZE	<b>1000</b>
	Apt Elev	<b>1026</b>

# RNAV (RNP) Z RWY 10

HARTSFIELD-JACKSON ATLANTA INTL (ATL)

**▽** For uncompensated Baro-VNAV systems, procedure NA below -8°C (18°F) or above 54°C (130°F). GPS required. Simultaneous approach authorized; arrival from ROBNS NA. For inop ALS, increase RNP 0.11 DA all Cats visibility to RVR 4500.

ALSF-2

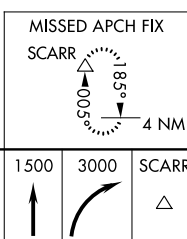
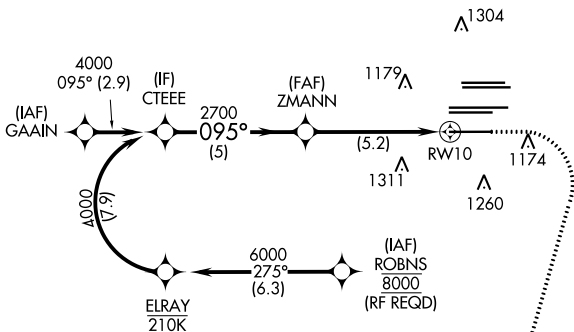


MISSED APPROACH: Climb to 1500 then climbing right turn to 3000 direct SCARR and hold.

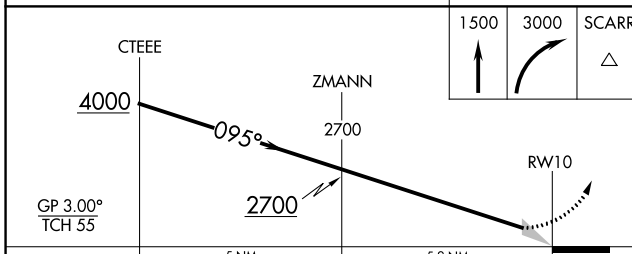
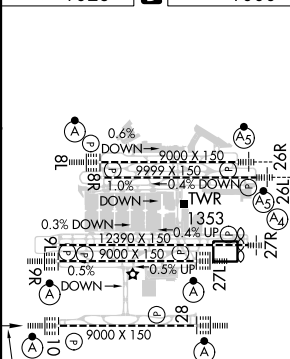
D-ATIS ARR <b>119.65</b>	ATLANTA APP CON <b>127.9 379.9</b>	ATLANTA TOWER				ALL RWYS	GND CON	ALL RWYS
DEP <b>125.55</b>		8L-26R	8R-26L	9L-27R	9R-27L	10-28	(8L-26R,8R-26L) (9L-27R,9R-27L)	10-28
		<b>119.1</b>	<b>125.325</b>	<b>123.85</b>	<b>119.3</b>	<b>119.5</b>	<b>121.9</b>	<b>121.75</b>
						<b>254.4</b>	<b>121.65</b>	<b>254.4</b>

2049  $\Delta$   
2049  $\Delta$

CLNC DEL	CPDLC
<b>118.1</b>	



ELEV 1026 **D** TDZE 1000



CATEGORY	A	B	C	D
RNP 0.11 DA		1290/24	290 (300-1/2)	
RNP 0.30 DA		1456/50	456 (500-1)	

## AUTHORIZATION REQUIRED

HIRL all Rwy's  
TDZ/CL Rwy's 8L, 9R,  
10, 26R, 27L and 28

SE-4, 11 JUL 2024 to 08 AUG 2024

SE-4, 11 JUL 2024 to 08 AUG 2024