

WAAS CH <b>61000</b> <b>W26B</b>	APP CRS <b>275°</b>	Rwy Idg TDZE <b>990</b> Apt Elev <b>1026</b>
--	------------------------	--

# RNAV (GPS) Y RWY 26R

HARTSFIELD-JACKSON ATLANTA INTL (ATL)

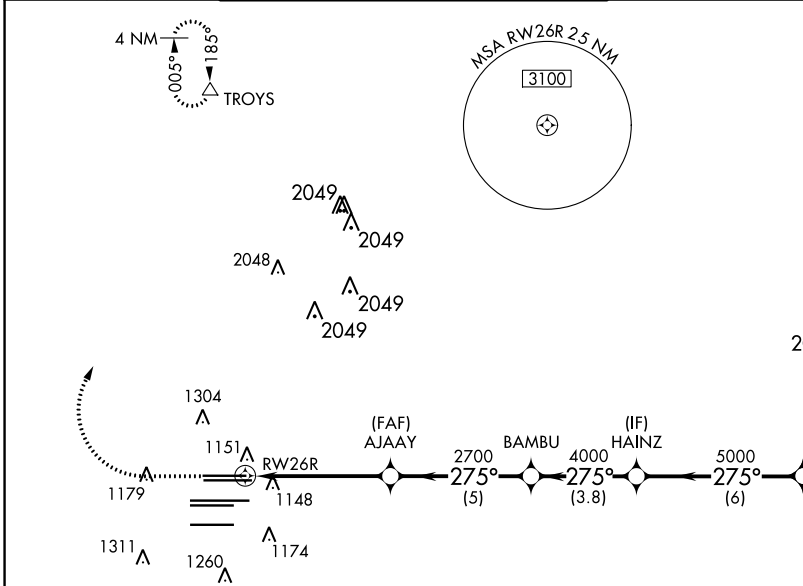
**▽** For uncompensated Baro-VNAV systems, LNAV/VNAV NA below -7°C (20°F) or above 54°C (130°F). DME/DME RNP-0.3 NA. Simultaneous approach authorized with Rwy 27R or 27L or 28, or Rwys 27R and 28. LNAV procedure NA during simultaneous operations. Use of FD or AP providing RNAV track guidance required during simultaneous operations.



**MISSED APPROACH:**  
Climb to 1500 then climbing right turn to 3500 direct TROYS and hold.

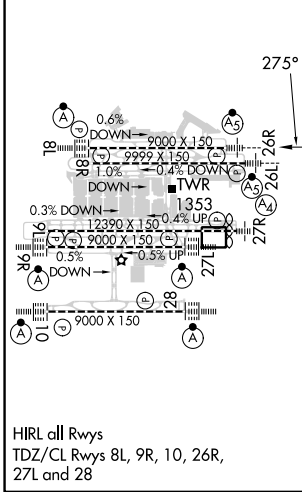
D-ATIS ARR <b>119.65</b>	ATLANTA APP CON <b>127.9 379.9</b>	ATLANTA TOWER 8L-26R 8R-26L 9L-27R 9R-27L 10-28 RWYS <b>119.1 125.325 123.85 119.3 119.5 254.4</b>				ALL RWYS <b>121.9</b>	GND CON (8L-26R,8R-26L) (9L-27R,9R-27L) 10-28 <b>121.75 121.65 254.4</b>	ALL RWYS
-----------------------------	--	--	--	--	--	-----------------------------	--	-------------

CINC DEL <b>118.1</b>	CPDLC
-----------------------------	-------



ELEV 1026	<b>D</b> TDZE 990
-----------	-------------------

## RADAR REQUIRED



1500	3500	TROYS	VGSi and RNAV glidepath not coincident (VGSi Angle 3.00/TCH 69).		HAINZ	ZELOW
*LNAV only.		AJAAY	BAMB	5000	275°	5000
*1.3 NM to RWY 26R		2700	4000	5000	2700	GP 3.00° TCH 55
RWY 26R		1.3	3.9 NM	5 NM	3.8 NM	6 NM
CATEGORY	A	B	C	D		
LPV DA	1190/18		200 (200-½)			
LNAV/VNAV DA	1426/50		436 (500-1)			
LNAV MDA	1460/24	470 (500-½)		1460/50	470 (500-1)	

SE-4, 11 JUL 2024 to 08 AUG 2024

SE-4, 11 JUL 2024 to 08 AUG 2024