

KAOLN SIX DEPARTURE (RNAV)

SE-4, 11 JUL 2024 to 08 AUG 2024

AUGUSTA DEP CON *
126.8 270.3
CLNC DEL
118.65

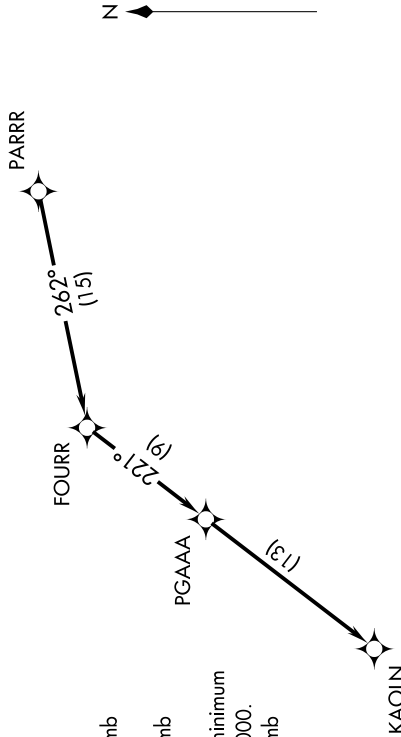
AUGUSTA TOWER *
118.7 (CTAF) 239.3

- NOTE: DME/DME/IRU or GPS required.
- NOTE: RADAR required for non-GPS equipped aircraft.
- NOTE: RNAV 1.
- NOTE: For use during Masters golf tournament week only.
- NOTE: Do not exceed 250K until advised by ATC.

TAKEOFF MINIMUMS

- Rwy 8: Standard with minimum climb of 394' per NM to 2500.
- Rwy 17: Standard with minimum climb of 265' per NM to 2400.
- Rwy 26: 300-1 $\frac{3}{4}$ or standard with minimum climb of 312' per NM to 2000.
- Rwy 35: Standard with minimum climb of 302' per NM to 2500.

**TOP ALTITUDE:
ASSIGNED BY ATC**



NOTE: Chart not to scale.

DEPARTURE ROUTE DESCRIPTION

TAKEOFF RUNWAYS 8, 17, 26, 35: Climb on assigned heading for RADAR vectors to PARRR, then on depicted route to KAOLN, thence. . . .

. . . maintain altitude assigned by ATC. Expect clearance to filed altitude/flight level within 10 minutes after departure.

SE-4, 11 JUL 2024 to 08 AUG 2024

KAOLN SIX DEPARTURE (RNAV)