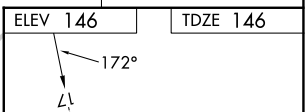
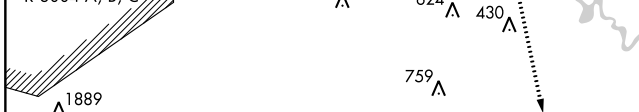
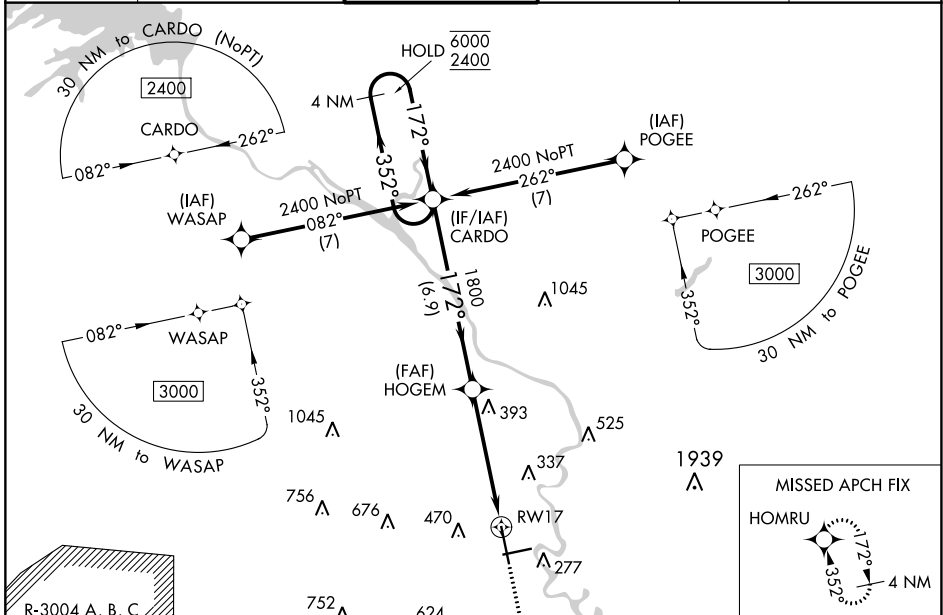


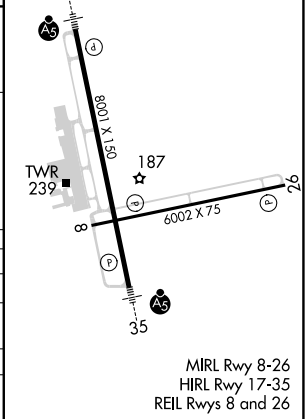
WAAS CH 77504 W17A	APP CRS 172°	Rwy Idg TDZE 146 Apt Elev 146	8001
--	------------------------	---	-------------

RNAV (GPS) RWY 17
AUGUSTA RGNL AT BUSH FLD (AGS)

RNP APCH - GPS.		MALSR MISSED APPROACH: Climb to 2100 direct HOMRU and hold.				
⚠ For uncompensated Baro-VNAV systems, LNAV/VNAV NA below -6°C or above 54°C. ⚠ For inop ALS, increase LNAV/VNAV all Cats visibility to RVR 4500.	ATIS 132.75	AUGUSTA APP CON ★ 126.8 270.3	AUGUSTA TOWER ★ 118.7 (CTAF) 0 239.3	GND CON 121.9 348.6	CLNC DEL 118.65	UNICOM 122.95



4 NM Holding Pattern VGSI and RNAV glidepath not coincident (VGSI Angle 3.00/TCH 71).	2100 	HOMRU 		
6000 ← 352° 2400 → 172° GP 3.00° TCH 57	HOGEM 1800 1.5 NM to RW17	RW17 1.5 NM		
6.9 NM 3.5 NM 1.5 NM				
CATEGORY	A	B	C	D
LPV DA		351/24	205 (300-½)	
LNAV/VNAV DA		460/24	314 (400-½)	
LNAV MDA	700/24	554 (600-½)	700/60	554 (600-1¼)
CIRCLING	780-1	634 (700-1)	780-1¾ 634 (700-1¾)	940-2½ 794 (800-2½)



SE-4, 11 JUL 2024 to 08 AUG 2024

SE-4, 11 JUL 2024 to 08 AUG 2024