

BIRMINGHAM, ALABAMA

AL-50 (FAA)

24137

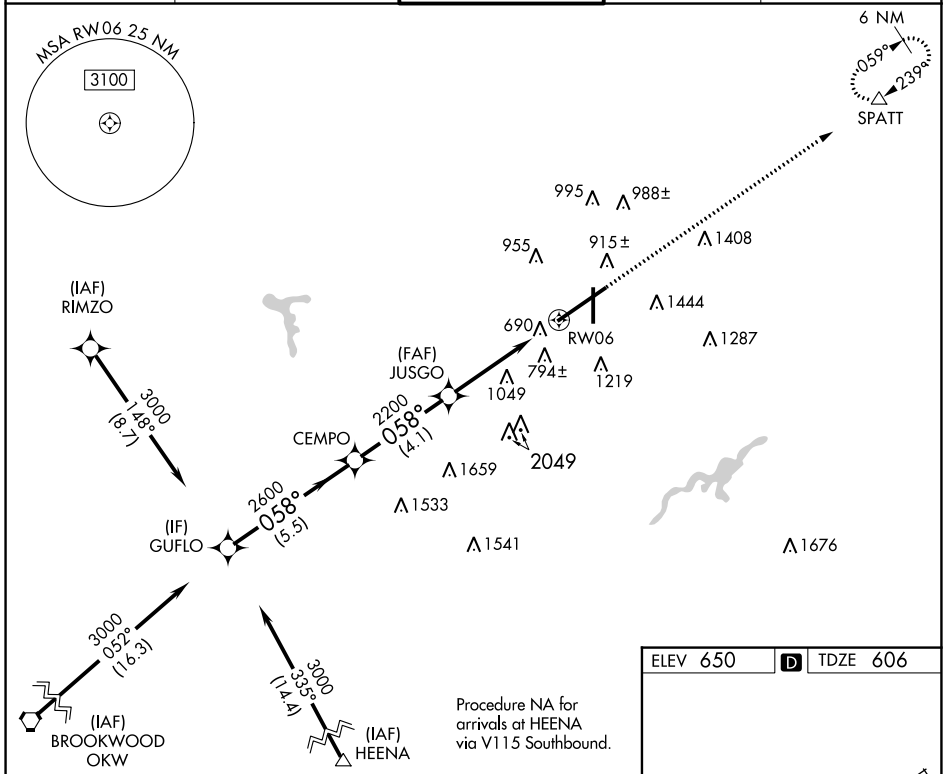
WAAS CH 82014 W06A	APP CRS 058°	Rwy Idg 12007 TDZE 606 Apt Elev 650
----------------------------------------	------------------------	----------------------------------------------------------------

RNAV (GPS) Y RWY 6

BIRMINGHAM-SHUTTLESWORTH INTL (BHM)

RNP APCH.	ALSF-2	MISSED APPROACH: Climb to 3300 direct SPATT and hold.
<p>▼ For uncompensated Baro-VNAV systems, LNAV/VNAV NA below -16°C (4°F) or above 47°C (116°F).</p>		

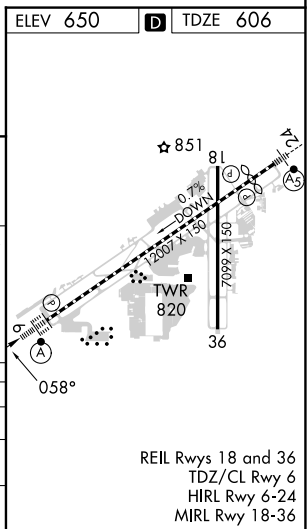
ATIS 119.4 270.1	BIRMINGHAM APP CON 123.8 256.8	BIRMINGHAM TOWER 119.9 317.725	GND CON 121.7 348.6	CLNC DEL 125.675 305.2
----------------------------	------------------------------------------	------------------------------------------	-------------------------------	----------------------------------



SE-4, 11 JUL 2024 to 08 AUG 2024

SE-4, 11 JUL 2024 to 08 AUG 2024

GUFLO	VGSi and RNAV glidepath not coincident (VGSi Angle 3.00/TCH 68).			3300	SPATT
Procedure Turn NA	3000	2600	JUSGO	* 2.4 NM to RW06	* LNAV only.
GP 3.00° TCH 53	058°	058°	058°	058°	
	5.5 NM	4.1 NM	2.4 NM	2.4 NM	
CATEGORY	A	B	C	D	
LPV DA		806/18	200 (200-½)		
LNAV/VNAV DA		1120/60	514 (500-1¼)		
LNAV MDA	1440/24 834 (800-½)	1440/40 834 (800-¾)	1440-2 834 (800-2)	1440-2¼ 834 (800-2¼)	



BIRMINGHAM, ALABAMA
Amdt 1C 13SEP18

RNAV (GPS) Y RWY 6

BIRMINGHAM-SHUTTLESWORTH INTL (BHM)

33°34'N-86°45'W