

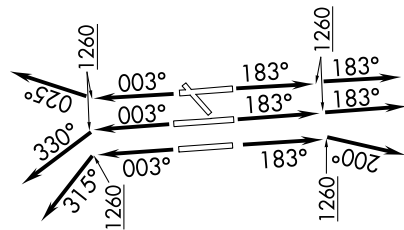
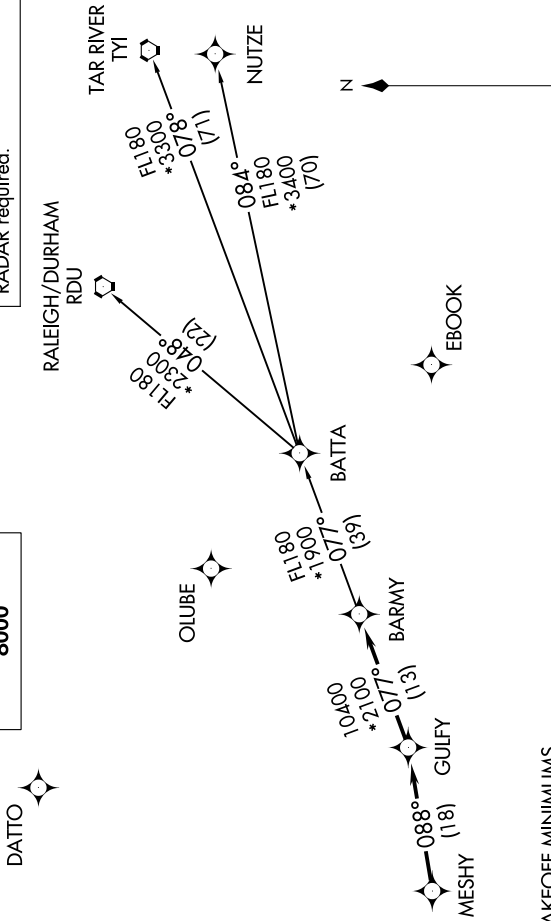
BARMY FIVE DEPARTURE (RNAV)

SE-2, 11 JUL 2024 to 08 AUG 2024

- CHARLOTTE DEP CON 124.0 307.8
- D-ATIS DEP 132.1
- CLINC DEL 127.15 348.6
- CPDLC
- GND CON 121.8 348.6 (WEST)
- 121.9 348.6 (EAST)
- CHARLOTTE TOWER 118.1 257.8 (Rwy 18L-36R)
- 126.4 257.8 (Rwy 18C-36C)
- 133.35 257.8 (Rwy 18R-36L)

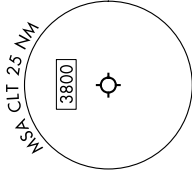
TOP ALTITUDE:
8000

RNAV 1 - DME/DME/IRU or GPS.
RADAR required.



TAKEOFF MINIMUMS
 Rwys 18L/C/R, 36C/R: Standard with minimum climb of 500' per NM to 1260.
 Rwy 36L: Standard with minimum climb of 500' per NM to 1400.

NOTE: For turbo jets only.
NOTE: If unable to accept climb rates, advise ATC on initial contact.
NOTE: Transponder code will be issued via PDC or Charlotte CLINC DEL.
NOTE: Accelerate to 250K, if unable advise ATC. Upon reaching 10000 MSL, accelerate to and maintain 280K, if unable advise ATC.



NOTE: Chart not to scale.

(CONTINUED ON FOLLOWING PAGE)

BARMY FIVE DEPARTURE (RNAV)

SE-2, 11 JUL 2024 to 08 AUG 2024