

LOC I-DQG	APP CRS	Rwy Idg	<b>10000</b>
<b>111.7</b>	<b>003°</b>	TDZE	<b>707</b>
		Apt Elev	<b>748</b>

# ILS or LOC RWY 36C

CHARLOTTE/DOUGLAS INTL (CLT)

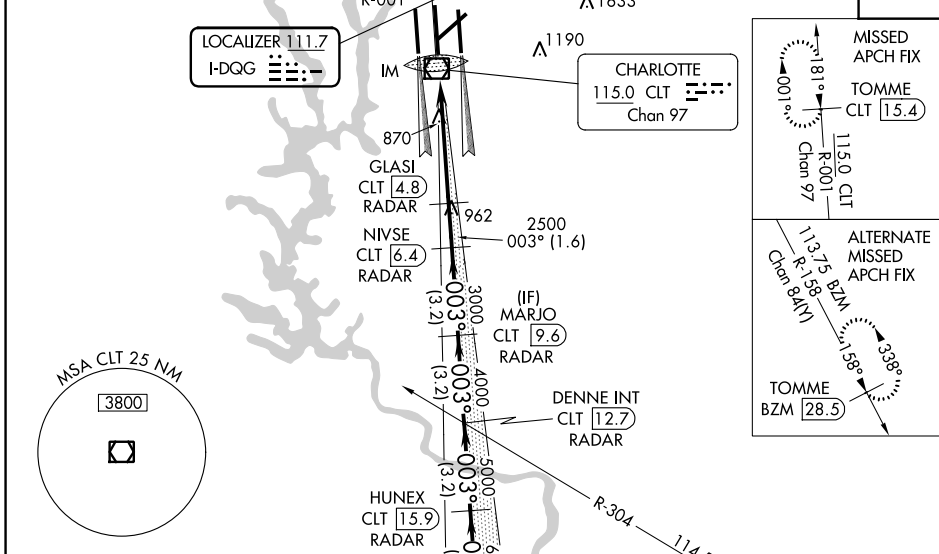
RADAR required for procedure entry. DME or RADAR required.

**⚠** Circling NA at night. Simultaneous approach authorized. DQG ILS LLZ Rwy 36C unusable for rollout guidance.

ALSF-2  
**A**

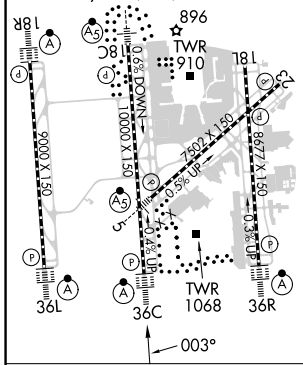
MISSED APPROACH: Climb to 3000 on CLT VOR/DME R-001 to TOMME/CLT 15.4 DME and hold.

D-ATIS	CHARLOTTE APP CON	CHARLOTTE TOWER	GND CON	CLNC DEL
ARR <b>121.15</b>	(001°-119°) <b>128.32</b>	(Rwys 18L-36R) <b>118.1 257.8</b>	<b>121.8 348.6</b> (WEST)	<b>127.15</b>
DEP <b>132.1</b>	(120°-295°) <b>120.05</b>	(Rwy 18C-36C) <b>126.4 257.8</b>	<b>121.9 348.6</b> (EAST)	<b>348.6</b>
	(296°-360°) <b>134.75</b>	(Rwy 18R-36L) <b>133.35 257.8</b>		
	(180°-359°) <b>257.2</b>			
	(360°-179°) <b>307.8</b>			

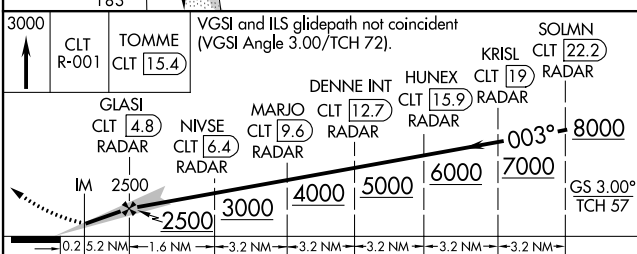


ELEV <b>748</b>	<b>D</b>	TDZE <b>707</b>
-----------------	----------	-----------------

HIRL all Rwys  
REIL Rwys 18L and 23  
TDZ/CL Rwys 18R, 36L, 36C and 36R



CLT R-001	TOMME CLT 15.4	SOLMN CLT 22.2
GLASI CLT 4.8	NIVSE CLT 6.4	MARJO CLT 9.6
DENNE INT CLT 12.7	HUNEX CLT 15.9	KRISL CLT 19



CATEGORY	A	B	C	D
S-ILS 36C	907/18 200 (200-½)			
S-LOC 36C	1120/24 413 (400-½)			
<b>C</b> CIRCLING	1380-1 632 (700-1)	1500-2¼ 752 (800-2¼)	1500-2½ 752 (800-2½)	

SE-2, 11 JUL 2024 to 08 AUG 2024

SE-2, 11 JUL 2024 to 08 AUG 2024