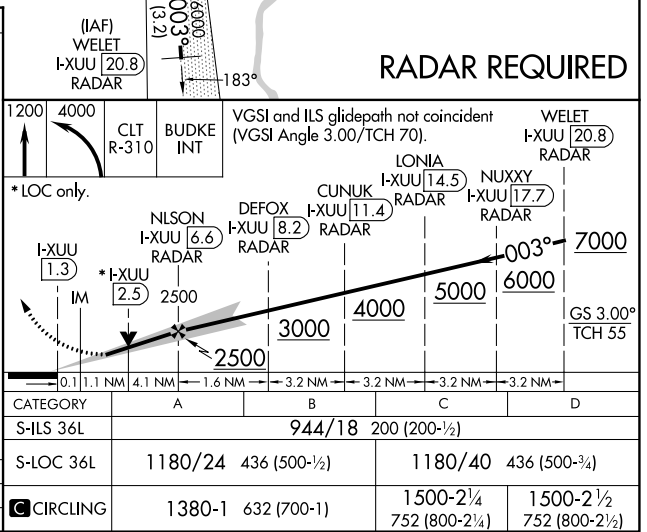
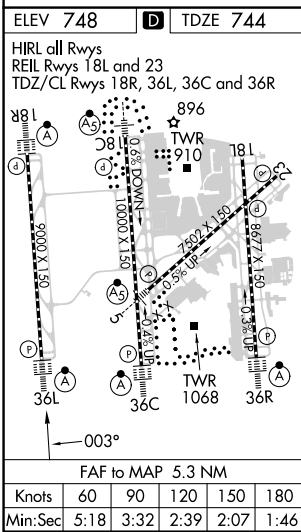
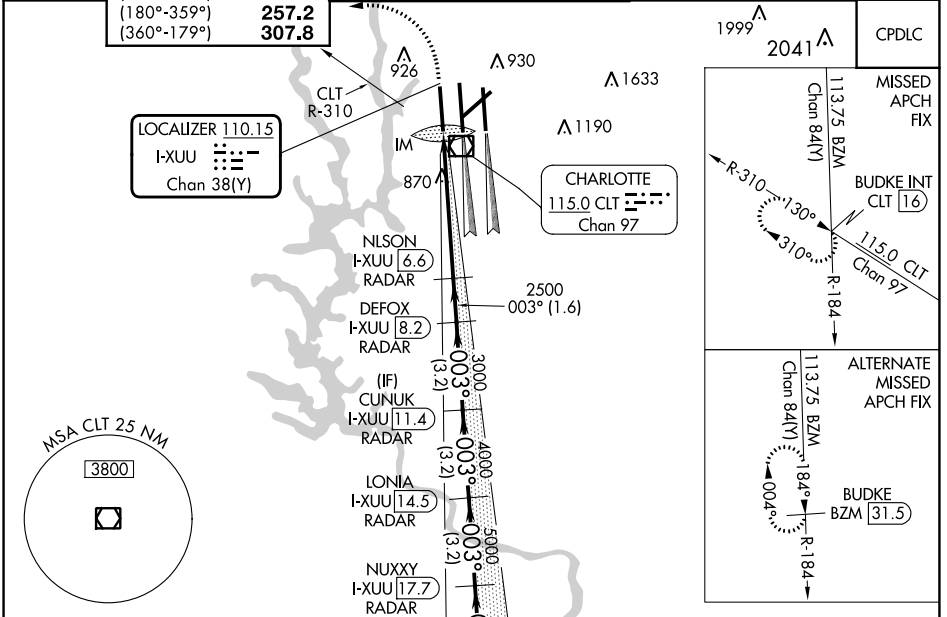


LOC/DME I-XUU <b>110.15</b> Chan 38(Y)	APP CRS <b>003°</b>	Rwy Idg TDZE <b>9000 744</b> Apt Elev <b>748</b>
--	------------------------	---

# ILS or LOC RWY 36L

CHARLOTTE/DOUGLAS INTL (CLT)

<p><b>⚠</b> Circling NA at night. Simultaneous approach authorized.</p> <p><b>⚠</b> DME or RADAR required.</p>	<p>ALSF-2</p>	<p>MISSED APPROACH: Climb to 1200 then climbing left turn to 4000 on CLT VOR/DME R-310 to BUDKE/CLT 16 DME and hold.</p>		
<p>D-ATIS ARR <b>121.15</b> DEP <b>132.1</b></p>	<p>CHARLOTTE APP CON (001°-119°) <b>128.32</b> (120°-295°) <b>120.05</b> (296°-360°) <b>134.75</b> (180°-359°) <b>257.2</b> (360°-179°) <b>307.8</b></p>	<p>CHARLOTTE TOWER (Rwys 18L-36R) <b>118.1 257.8</b> (Rwy 18C-36C) <b>126.4 257.8</b> (Rwy 18R-36L) <b>133.35 257.8</b></p>	<p>GND CON <b>121.8 348.6</b> (WEST) <b>121.9 348.6</b> (EAST)</p>	<p>CLNC DEL <b>127.15 348.6</b></p>



SE-2, 11 JUL 2024 to 08 AUG 2024

SE-2, 11 JUL 2024 to 08 AUG 2024