

HI-ILS or LOC RWY 5L

LOC I-TYS 110.3	APCH CRS 051°	Rwy ldg TDZE Arprt Elev 9508 953 986	[USAF]	MC GHEE TYSON (KTYS)
---------------------------	-------------------------	--	--------	----------------------

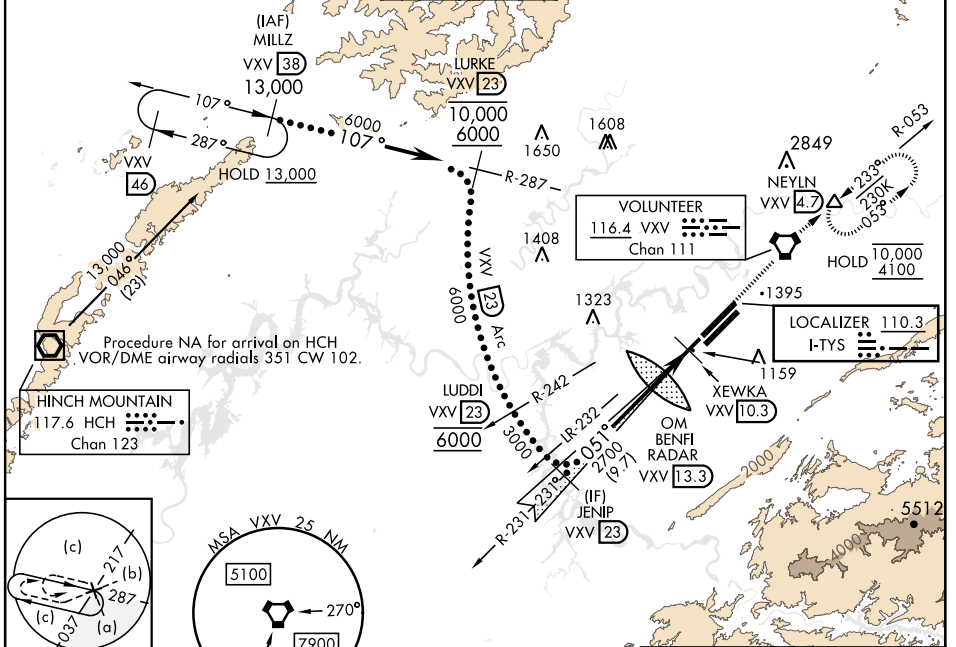
DME required

▼ *When ALS inop, increase CAT E vis to 3/4 mile.
**When ALS inop, increase CAT E vis to 1 1/8 miles.

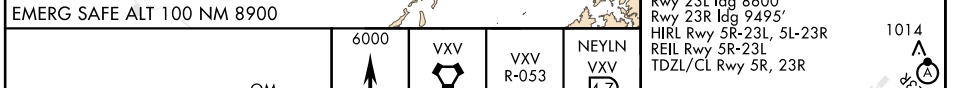
MALS R (A5)

MISSED APPROACH: Climb to 6000 direct to VXV VORTAC and on VXV R-053 to NEYLN/VXV 4.7 DME and hold, continue climb-in-hold to 6000.

ATIS 128.35	KNOXVILLE APP CON 123.9 360.8	KNOXVILLE TOWER 121.2 257.8	GND CON 121.9 348.6	CLNC DEL 121.65	ASR
-----------------------	---	---------------------------------------	-------------------------------	---------------------------	-----



ELEV 986	TDZE 953
----------	----------



EMERG SAFE ALT 100 NM 8900	<table border="1"> <tr> <td>6000</td> <td>VXV</td> <td>VXV R-053</td> <td>NEYLN VXV 4.7</td> </tr> </table>			6000	VXV	VXV R-053	NEYLN VXV 4.7
6000	VXV	VXV R-053	NEYLN VXV 4.7				
GS 3.00° TCH 55	<table border="1"> <tr> <td>3000</td> <td>2700</td> <td>1700</td> <td>1014</td> </tr> </table>			3000	2700	1700	1014
3000	2700	1700	1014				
CATEGORY	C	D	E				
S-ILS 5L *	1153-1/2	200 (200-1/2)					
S-LOC 5L **	1500-1 1/8	547 (600-1 1/8)					
CIRCLING	1660-2 674 (700-2)	1900-3	914 (1000-3)				

HI-ILS or LOC RWY 5L

SE-1, 11 JUL 2024 to 08 AUG 2024

SE-1, 11 JUL 2024 to 08 AUG 2024