

# HI-VOR or TACAN RWY 23R

VORTAC VXV <b>116.4</b> Chan <b>111</b>	APCH CRS <b>224°</b>	Rwy ldg TDZE Arpt Elev <b>9495</b> <b>984</b> <b>986</b>
---	-------------------------	---

[USAF]

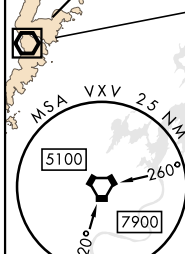
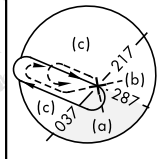
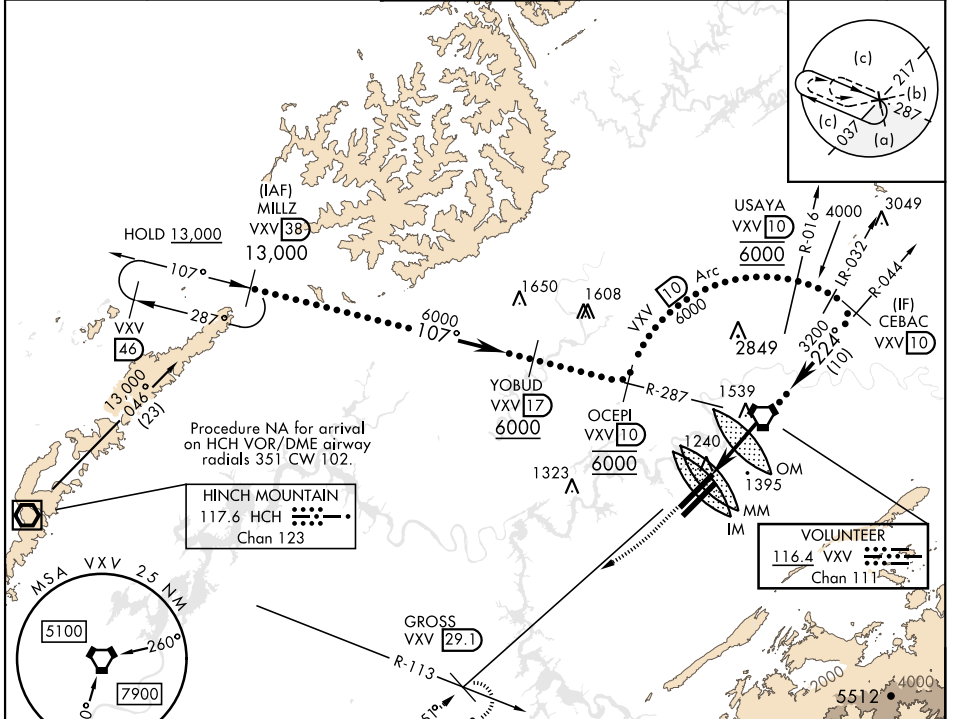
MC GHEE TYSON (KTYS)

DME required  
\* When ALS inop, increase vis to 1 1/8 miles.

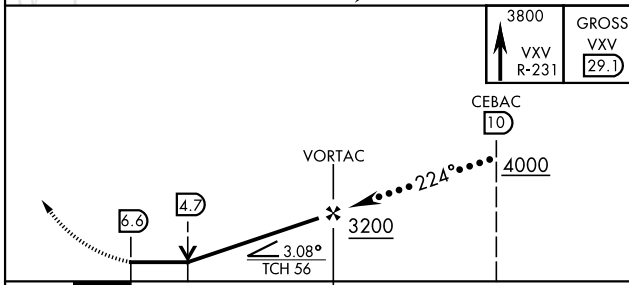


MISSED APPROACH: Climb to 3800 direct on VXV VORTAC R-231 to GROSS/29.1 DME and hold.

ATIS <b>128.35</b>	KNOXVILLE APP CON <b>123.9 360.8</b>	KNOXVILLE TOWER <b>121.2 257.8</b>	GND CON <b>121.9 348.6</b>	CLNC DEL <b>121.65</b>	ASR
-----------------------	---	---------------------------------------	-------------------------------	---------------------------	-----

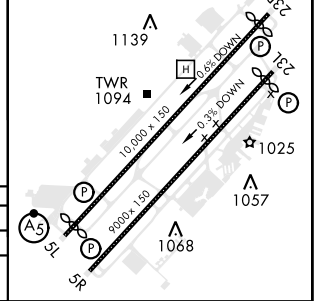


EMERG SAFE ALT 100 NM 8900



ELEV	986	TDZE	984
------	-----	------	-----

Rwy 05L ldg 9508'  
Rwy 05R ldg 8600'  
Rwy 23L ldg 8600'  
Rwy 23R ldg 9495'  
HIRL Rwy 5R-23L, 5L-23R  
REIL Rwy 5R-23L  
TDZL/CL Rwy 5R, 23R



CATEGORY	C	D	E
S-23R*	1640-13/8	656	(700-13/8)
CIRCLING	1660-2	1900-3	
	674 (700-2)	914 (1000-3)	

# HI-VOR or TACAN RWY 23R

SE-1, 11 JUL 2024 to 08 AUG 2024

SE-1, 11 JUL 2024 to 08 AUG 2024