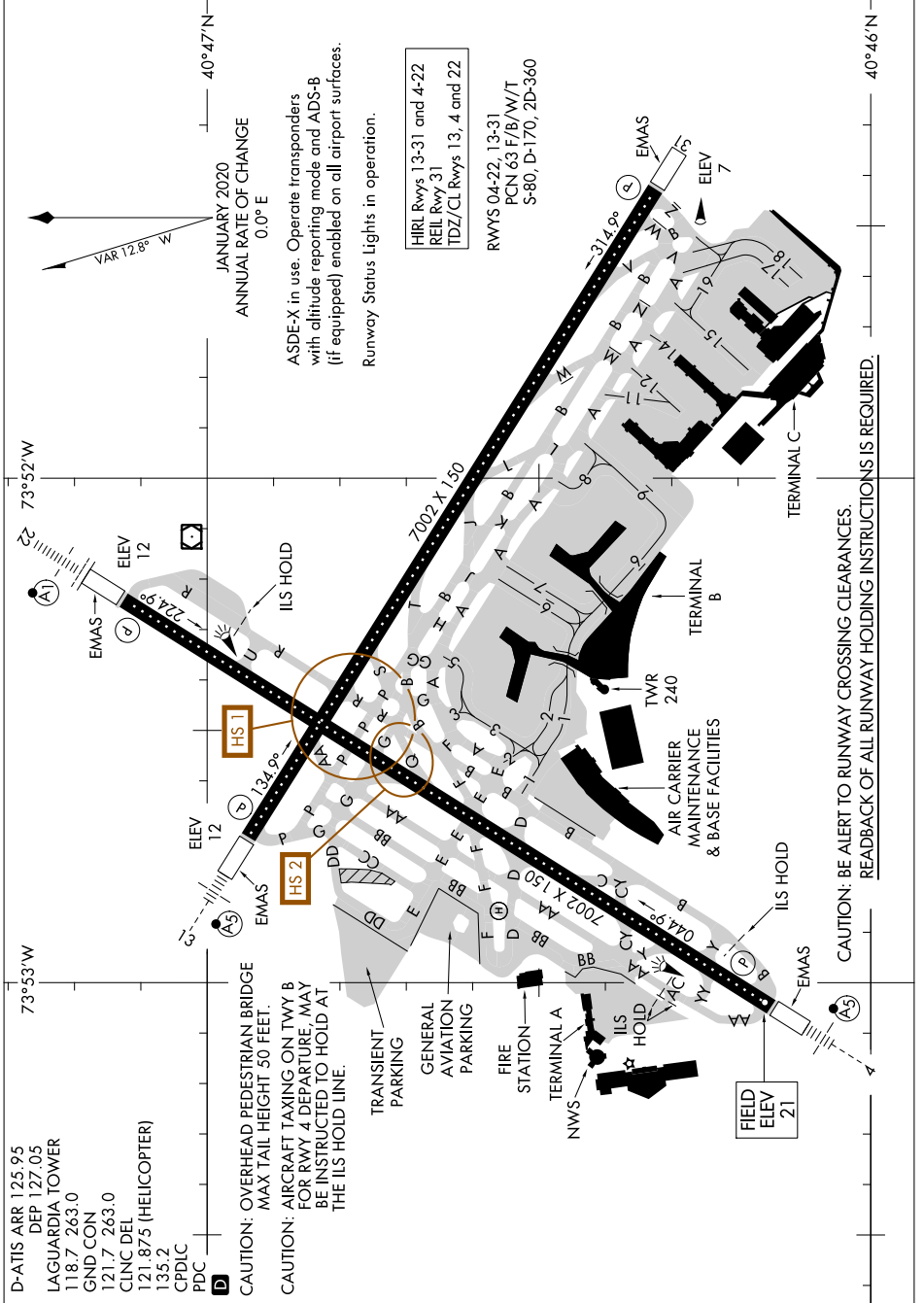


AIRPORT DIAGRAM

AL-289 (FAA)

LAGUARDIA (LGA)
NEW YORK, NEW YORK

NE-2, 11 JUL 2024 to 08 AUG 2024



D-ATIS ARR 125.95
 DEP 127.05
 LAGUARDIA TOWER
 118.7 263.0
 GND CON
 121.7 263.0
 CLNC DEL
 121.875 (HELICOPTER)
 135.2
 CPDLC
 PDC

CAUTION: OVERHEAD PEDESTRIAN BRIDGE
 MAX TAIL HEIGHT 50 FEET.
 CAUTION: AIRCRAFT TAXING ON TWY B
 FOR RWY 4 DEPARTURE, MAY
 BE INSTRUCTED TO HOLD AT
 THE ILS HOLD LINE.

HIRL Rwy 13-31 and 4-22
 REIL Rwy 31
 TDZ/CL Rwy 13, 4 and 22

RWYS 04-22, 13-31
 PCN 63 F/B/W/T
 S-80, D-170, 2D-360

ASDE-X in use. Operate transponders
 with altitude reporting mode and ADS-B
 (if equipped) enabled on all airport surfaces.
 Runway Status lights in operation.

CAUTION: BE ALERT TO RUNWAY CROSSING CLEARANCES.
 REARBACK OF ALL RUNWAY HOLDING INSTRUCTIONS IS REQUIRED.

AIRPORT DIAGRAM

NEW YORK, NEW YORK
LAGUARDIA (LGA)

NE-2, 11 JUL 2024 to 08 AUG 2024