

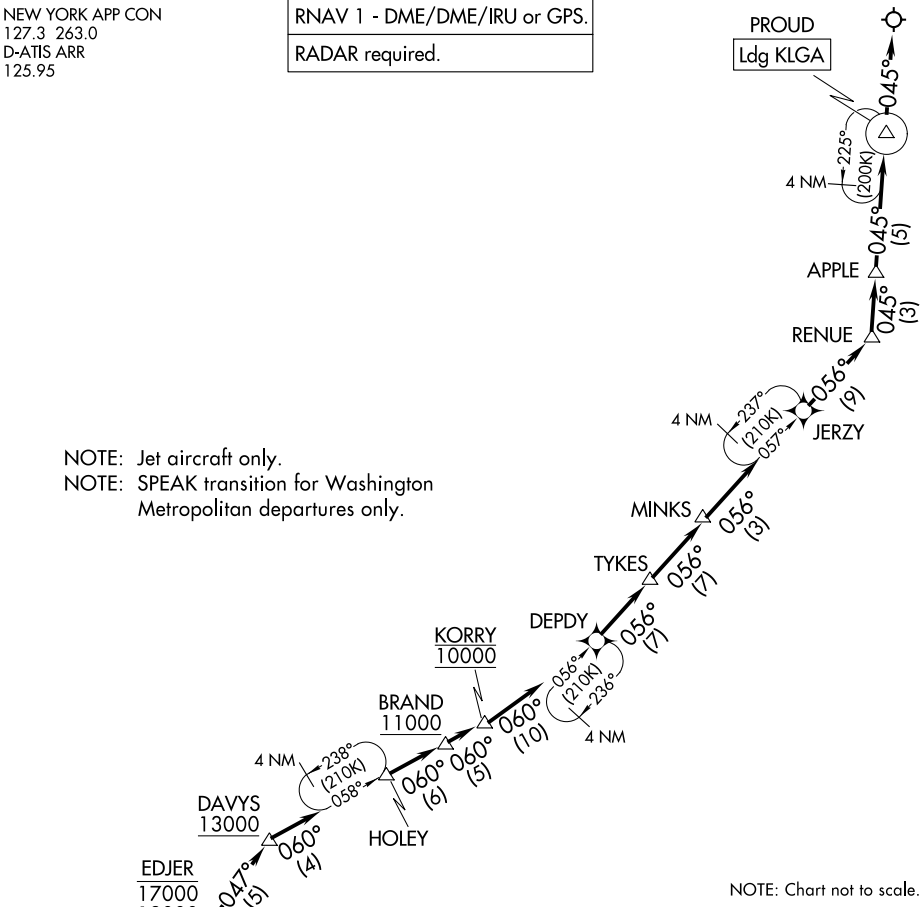
PROUD TWO ARRIVAL (RNAV) Arrival Routes

NEW YORK APP CON
127.3 263.0
D-ATIS ARR
125.95

RNAV 1 - DME/DME/IRU or GPS.

RADAR required.

PROUD
Ldg KLG A



NOTE: Jet aircraft only.
NOTE: SPEAK transition for Washington Metropolitan departures only.

NOTE: Chart not to scale.

ARRIVAL ROUTE DESCRIPTION

From ENO VORTAC on track 047° to cross SKIPY between FL190 and FL220, then on track 048° to cross BESSI at or above 17000, then on track 046° to cross EDJER between 13000 and 17000, then on track 047° to cross DAVYS at or above 13000, then on track 060° to HOLEY, then on track 060° to cross BRAND at or above 11000, then on track 060° to cross KORRY at 10000, then on track 060° to DEPDI, then on track 056° to TYKES, then on track 056° to MINKS, then on track 056° to JERZY, then on track 056° to RENU, then on track 045° to APPLE, then on track 045° to PROUD, then on track 045°. Expect RADAR vectors to final approach course.

NE-2, 11 JUL 2024 to 08 AUG 2024

NE-2, 11 JUL 2024 to 08 AUG 2024