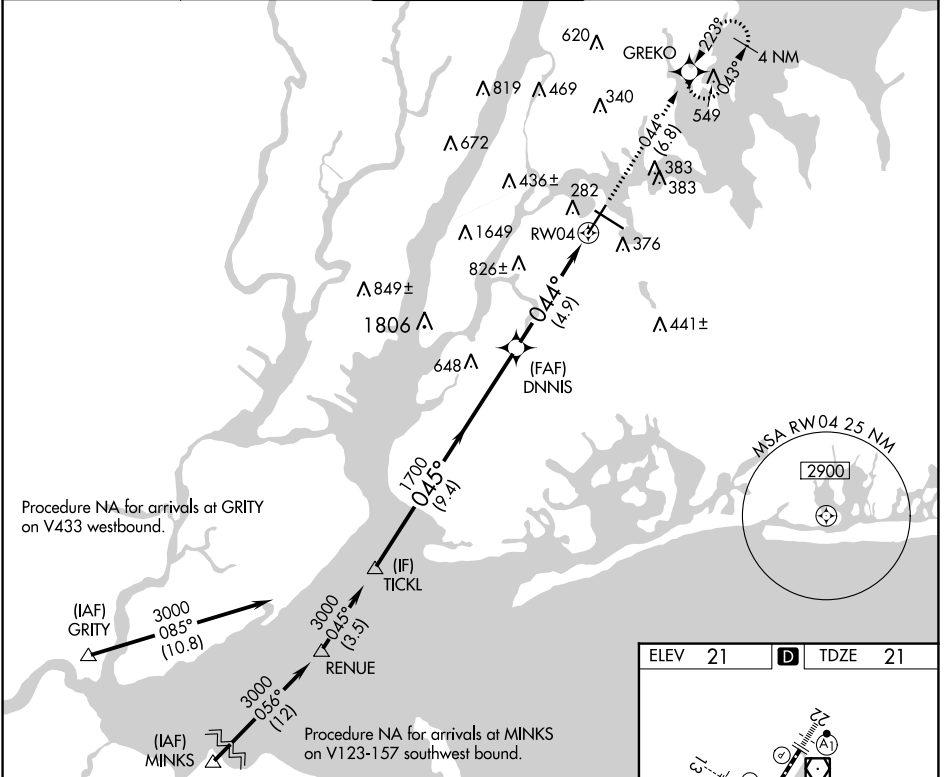


APP CRS	Rwy Idg	7002
044°	TDZE	21
	Apt Elev	21

RNAV (RNP) Z RWY 4

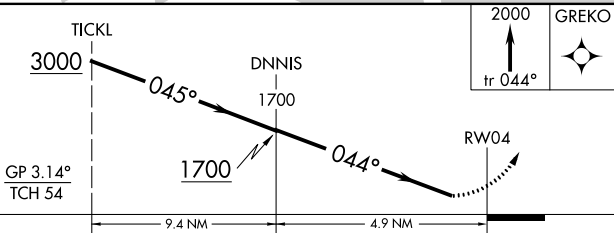
LAGUARDIA (LGA)

RNP AR APCH - GPS.		MALSR		MISSED APPROACH: Climb to 2000 on track 044° to GREKO and hold, continue climb-in-hold to 2000.	
<p>▼ For uncompensated Baro-VNAV systems, procedure NA below -12°C or above 54°C. For inop ALS, increase RNP 0.18 visibility to 1 3/8 SM.</p>					
D-ATIS ARR	125.95	NEW YORK APP CON	120.8 263.0	LAGUARDIA TOWER	118.7 263.0
D-ATIS DEP	127.05			GND CON	121.7 263.0
				CLNC DEL	135.2
				CPDLC	

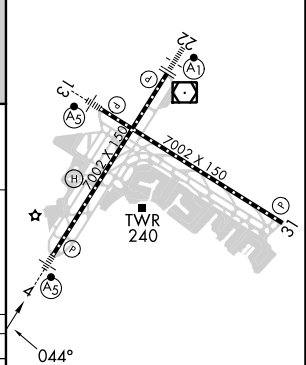


Procedure NA for arrivals at GRITY on V433 westbound.

Procedure NA for arrivals at MINKS on V123-157 southwest bound.



ELEV	21	D	TDZE	21
------	----	----------	------	----



CATEGORY	A	B	C	D
RNP 0.18 DA		482/50	461 (500-1)	
RNP 0.30 DA		610-1 1/4	589 (600-1 1/4)	

AUTHORIZATION REQUIRED

TDZ/CL Rws 4, 13 and 22
HIRL Rws 4-22 and 13-31
REIL Rwy 31

NE-2, 11 JUL 2024 to 08 AUG 2024

NE-2, 11 JUL 2024 to 08 AUG 2024