

LOC/DME-B

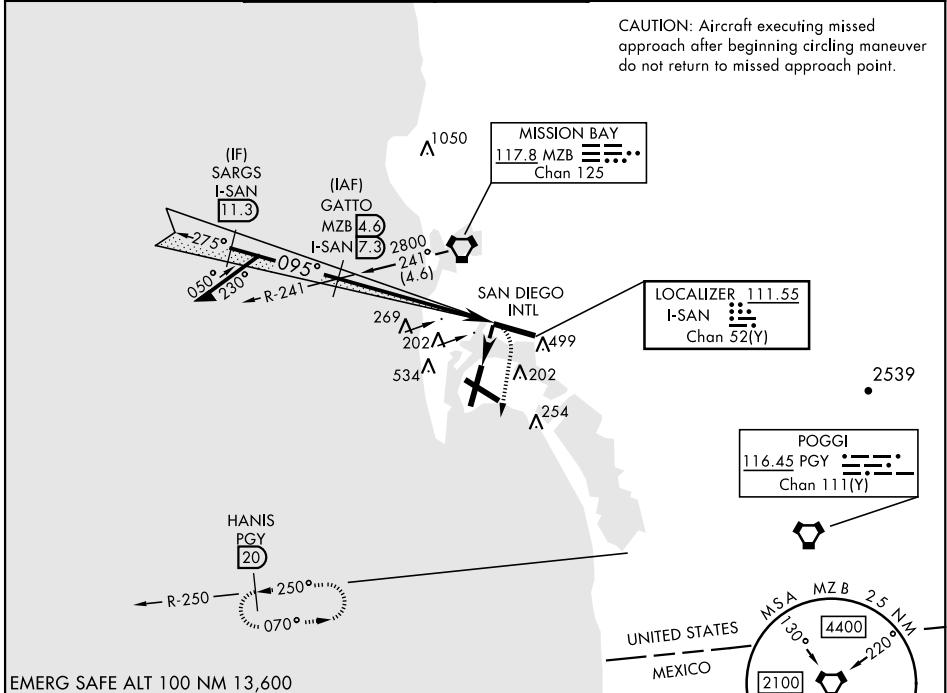
LOC/DME I-SAN 111.55 Chan 52(Y)	APCH CRS 095°	Rwy Idg THRE Arprt Elev N/A N/A 26	AL-374 [USN]	NORTH ISLAND NAS (HALSEY FIELD) (KNZY)
---	-------------------------	--	--------------	--

RADAR required at SARGs.

▼ * CAUTION: Maneuvering for circling approach not authorized W of Rwy 18-36 centerline. Approach authorized for Rwy 18 or left downwind approach to Rwy 29 after flying down Rwy 18.

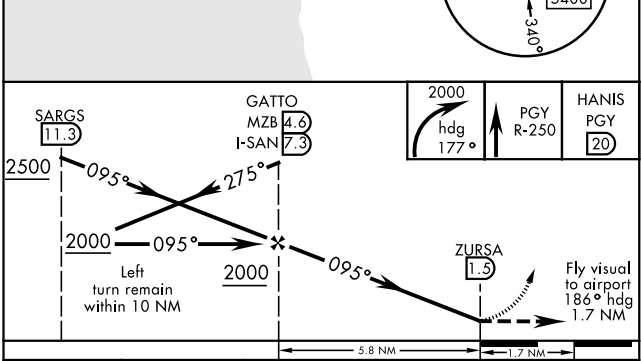
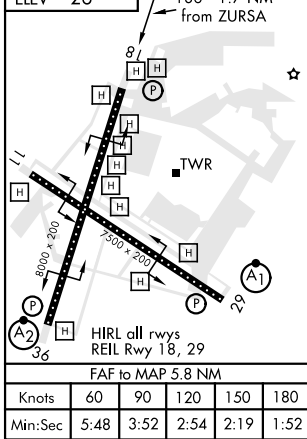
MISSED APPROACH: Climb and maintain 2000 via hdg 177°, intercept PGY VORTAC R-250 to HANIS and hold.

ATIS ★ 317.8	SOCAL APP CON 125.15 317.55	NORTH ISLAND TOWER ★ 135.1 336.4	LINDBERGH TOWER 118.3 338.225	GND CON 118.0 360.675	CLNC DEL 128.4 288.25	PAR/ASR
------------------------	---------------------------------------	--	---	---------------------------------	---------------------------------	---------



CAUTION: Aircraft executing missed approach after beginning circling maneuver do not return to missed approach point.

EMERG SAFE ALT 100 NM 13,600



FAF to MAP 5.8 NM	CATEGORY	A	B	C	D
Knots: 60 90 120 150 180	CIRCLING*	860-2	834 (900-2)	880-2½ 854 (900-2½)	880-2¾ 854 (900-2¾)
Min:Sec: 5:48 3:52 2:54 2:19 1:52					

SAN DIEGO, CALIFORNIA 32°42'N-117°13'W NORTH ISLAND NAS (HALSEY FIELD) (KNZY)

Amdt 7 05NOV20

LOC/DME-B

SW-3, 11 JUL 2024 to 08 AUG 2024

SW-3, 11 JUL 2024 to 08 AUG 2024