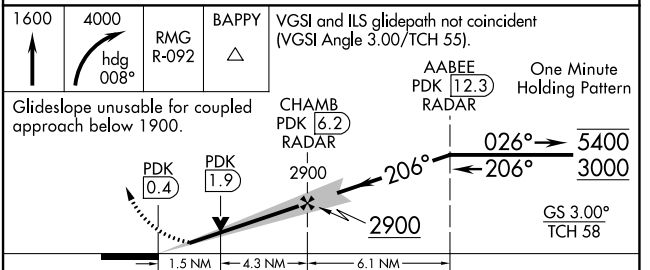
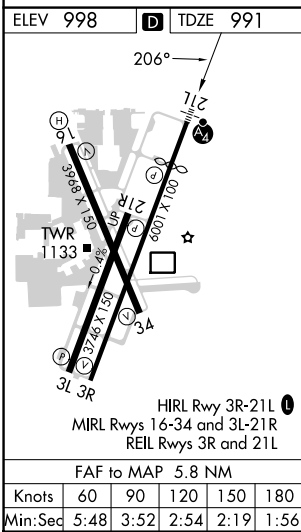
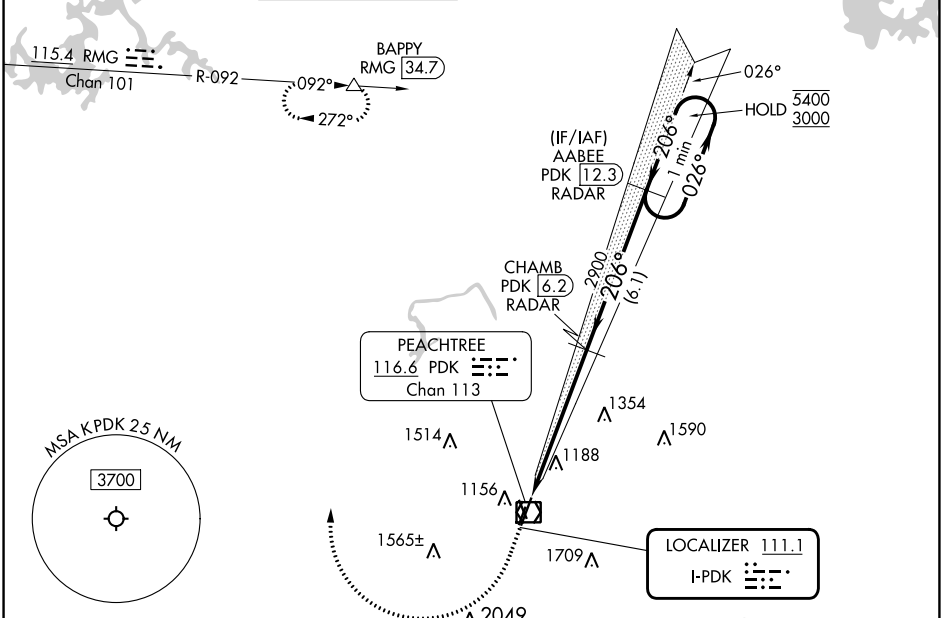


|                           |                        |                             |   |
|---------------------------|------------------------|-----------------------------|---|
| LOC I-PDK<br><b>111.1</b> | APP CRS<br><b>206°</b> | Rwy Idg<br>TDZE<br>Apt Elev | <b>4996</b><br><b>991</b><br><b>998</b> |
|---------------------------|------------------------|-----------------------------|---|

# ILS or LOC RWY 21L

DEKALB-PEACHTREE (PDK)

|  |   |  |                         |                          |   |  |              |
|--|---|--|-------------------------|--------------------------|---|--|--------------|
| RADAR required for procedure entry. DME or RADAR required.   |   |  |                         | MALSF                    |   | MISSED APPROACH: Climb to 1600 then climbing right turn to 4000 on heading 008° and RMG VORTAC R-092 to BAPPY/RMG 34.7 DME and hold. |              |
| ⚠ Circling Rwy 16, 34 NA at night. DME from PDK VOR/DME. Simultaneous reception of I-PDK and PDK DME required. Rwy 21L helicopter visibility reduction below RVR 4000 NA. For inop ALS, increase S-LOC 21L Cat A/B visibility to RVR 5500. |   |  |                         |                          |   |  |              |
| ATIS<br><b>128.4</b>   | ATLANTA APP CON<br><b>126.975 239.275</b> | PEACHTREE TOWER ★<br><b>120.9 (CTAF) 281.5</b> | GND CON<br><b>121.6</b> | CLNC DEL<br><b>125.2</b> | CLNC DEL<br><b>120.9</b><br>(When twr closed) | UNICOM<br><b>122.95</b>  | <b>120.0</b> |



|            |                    |             |                         |                         |
|------------|--------------------|-------------|-------------------------|-------------------------|
| CATEGORY   | A                  | B           | C                       | D                       |
| S-ILS 21L  | 1330/40            |             | 339 (400-¾)             |                         |
| S-LOC 21L  | 1520/40            | 529 (600-¾) | 1520-1¼                 | 529 (600-1¼)            |
| ☑ CIRCLING | 1520-1 522 (600-1) |             | 1840-2½<br>842 (900-2½) | 2060-3<br>1062 (1100-3) |

SE-4, 11 JUL 2024 to 08 AUG 2024

SE-4, 11 JUL 2024 to 08 AUG 2024