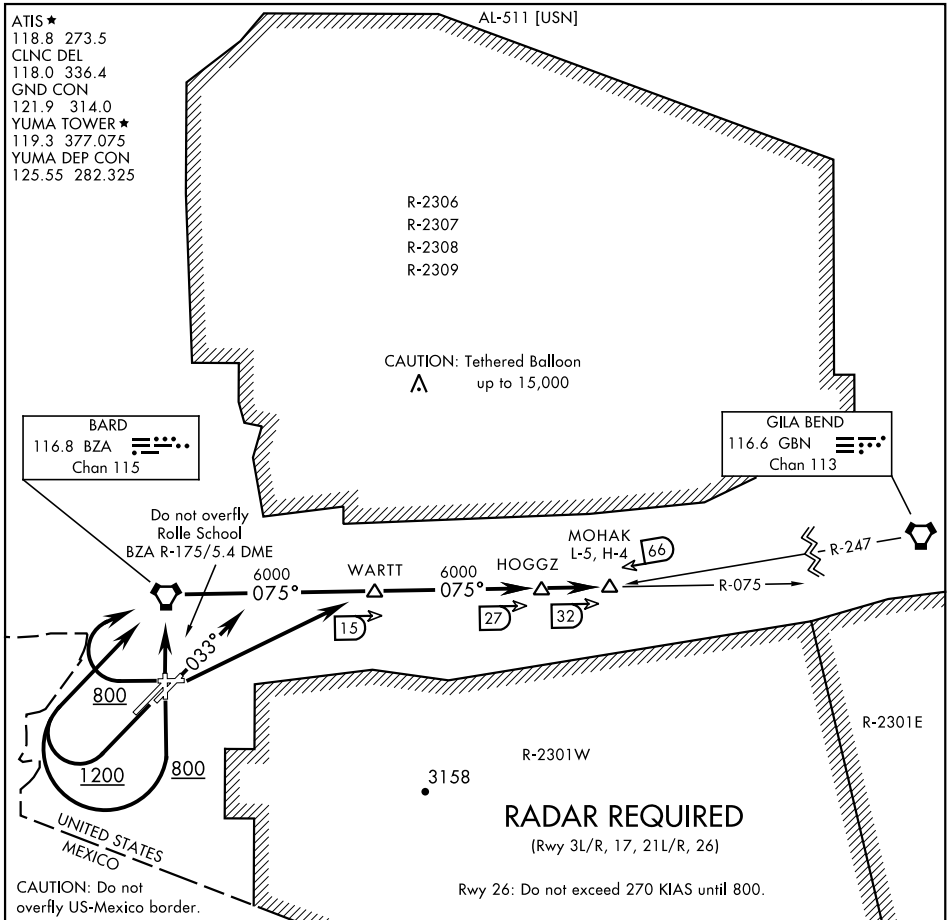


MOHAK FIVE DEPARTURE (MOHAK5•MOHAK)

YUMA MCAS/YUMA INTL (KNYL)

YUMA, ARIZONA



SW-4, 11 JUL 2024 to 08 AUG 2024

SW-4, 11 JUL 2024 to 08 AUG 2024

ATIS ★
 118.8 273.5
 CLNC DEL
 118.0 336.4
 GND CON
 121.9 314.0
 YUMA TOWER ★
 119.3 377.075
 YUMA DEP CON
 125.55 282.325

R-2306
 R-2307
 R-2308
 R-2309

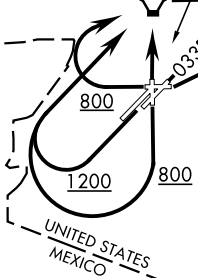
CAUTION: Tethered Balloon
 ▲ up to 15,000

BARD
 116.8 BZA
 Chan 115

GILA BEND
 116.6 GBN
 Chan 113

Do not overfly
 Rolle School
 BZA R-175/5.4 DME

MOHAK
 L-5, H-4



CAUTION: Do not overfly US-Mexico border.

RADAR REQUIRED
 (Rwy 3L/R, 17, 21L/R, 26)

Rwy 26: Do not exceed 270 KIAS until 800.

DEPARTURE ROUTE DESCRIPTION

- TAKE-OFF RWY 3L/R: Climb hdg 033°, then RADAR vectors to intercept BZA VORTAC R-075. Thence...
- TAKE-OFF RWY 8: Climbing left turn direct WARTT. Thence...
- TAKE-OFF RWY 17: Climb to 800, then climbing right turn direct BZA VORTAC. Thence...
- TAKE-OFF RWY 21L/R: Climb to 1200, then climbing right turn direct BZA VORTAC. Thence...
- TAKE-OFF RWY 26: Climb to 800, then climbing right turn direct BZA VORTAC. Do not exceed 270 KIAS until 800.
- TAKE-OFF RWY 35: Climb direct BZA VORTAC. Thence....

...via BZA R-075 to MOHAK INT via HOGGZ INT. Then via assigned route. Maintain assigned altitude. Expect clearance to filed altitude/flight level 10 minutes after departure.

MOHAK FIVE DEPARTURE (MOHAK5•MOHAK)

Orig 22APR21

YUMA, ARIZONA

YUMA MCAS/YUMA INTL (KNYL)