

YUMA, ARIZONA

# TACAN Y RWY 3L

YUMA MCAS/YUMA INTL (KNYL)

TACAN NYL Chan <b>84</b>	APCH CRS <b>039°</b>	Rwy Ildg <b>13,300</b> TDZE <b>195</b> Arprt Elev <b>213</b>
-----------------------------	-------------------------	--

AL-511 [USN]

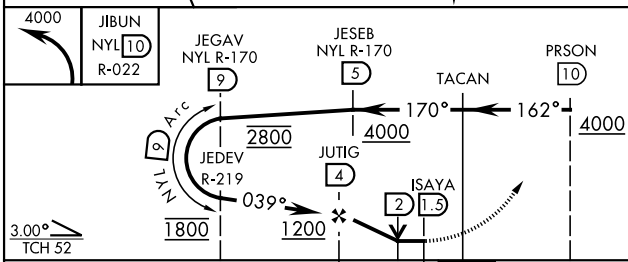
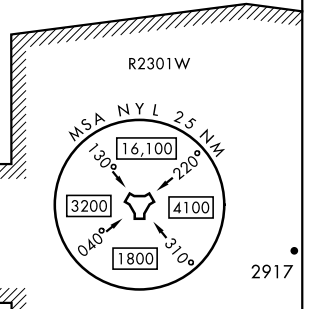
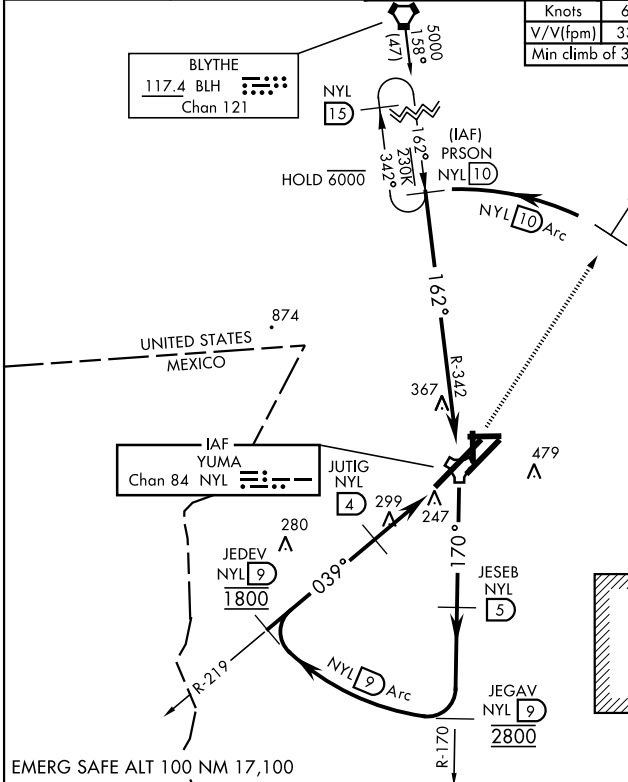
**MISSSED APPROACH:** Climbing left turn to 4000, intercept NYL TACAN R-022 to JIBUN, cross JIBUN at or above 4000.

ATIS ★ <b>118.8 273.5</b>	APP CON <b>124.7 371.975</b>	TOWER ★ <b>119.3 (CTAF) 0 377.075</b>	GND CON <b>121.9 314.0</b>	CLNC DEL <b>118.0 336.4</b>	ASR/ PAR
------------------------------	---------------------------------	--	-------------------------------	--------------------------------	-------------

Knots	60	120	180	240	300	360
V/V (fpm)	330	660	990	1320	1650	1980
Min climb of 330 ft/NM to 4000 - Controlling Obstacle Unk						

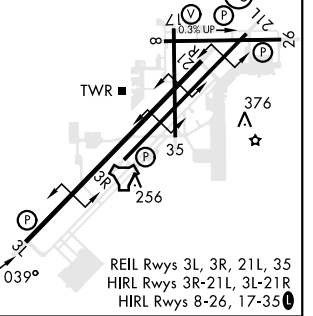
**CAUTION:**  
R-2306E located  
14.9 NM NE of NYL  
TACAN.

**CAUTION:** Short intmd,  
recommend early  
configuration.



ELEV 213	TDZE 195
----------	----------

3L-21R	13,300 x 200
3R-21L	9239 x 150
8-26	6146 x 150
17-35	5710 x 150



CATEGORY	A	B	C	D
S-3L		560-1	365 (400-1)	
CIRCLING	680-1 467 (500-1)	700-1 487 (500-1)	800-1½ 587 (600-1½)	800-2 587 (600-2)

YUMA, ARIZONA  
Amdt 5 22APR21

32°39'N-114°36'W

YUMA MCAS/YUMA INTL (KNYL)

# TACAN Y RWY 3L

SW-4, 11 JUL 2024 to 08 AUG 2024

SW-4, 11 JUL 2024 to 08 AUG 2024