

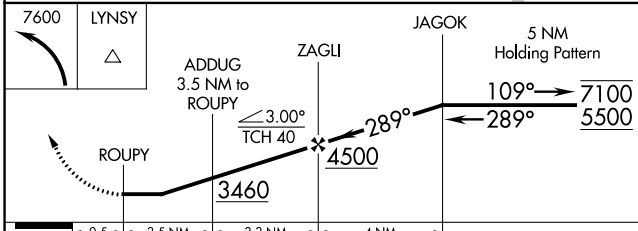
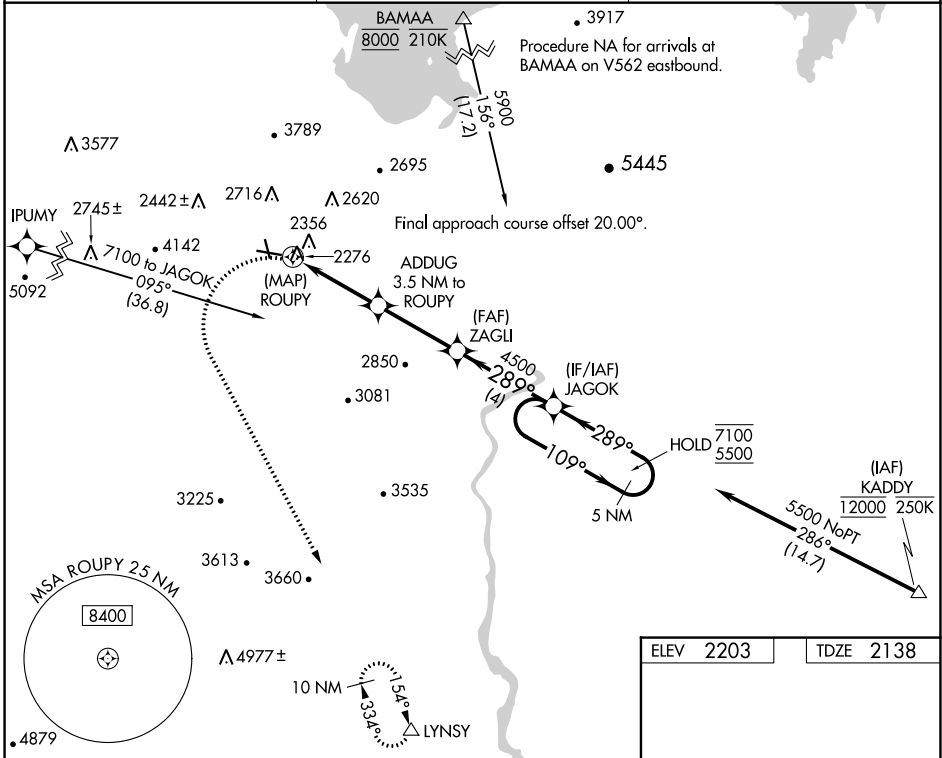
WAAS CH <b>77643</b> <b>W27A</b>	APP CRS <b>289°</b>	Rwy Idg TDZE Apt Elev	<b>4803</b> <b>2138</b> <b>2203</b>
--	------------------------	-----------------------------	---

# RNAV (GPS) RWY 27

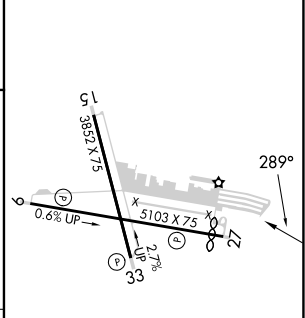
BOULDER CITY MUNI (BVU)

RNP APCH.	MISSED APPROACH: Climbing left turn to 7600 direct LYNSY and hold, continue climb-in-hold to 7600.
<p>Procedure NA at night. Rwy 27 helicopter visibility reduction below 1 SM NA.</p>	

AWOS-3 <b>118.475</b>	LAS VEGAS APP CON <b>125.475 307.25</b>	UNICOM <b>122.7 (CTAF) 0</b>
--------------------------	--	---------------------------------



ELEV 2203	TDZE 2138
-----------	-----------



CATEGORY	A	B	C	D
LP MDA	2640-1	502 (500-1)	2640-1 <sup>3</sup> / <sub>8</sub> 502 (500-1 <sup>3</sup> / <sub>8</sub> )	NA
LNAV MDA	2940-1 802 (800-1)	2940-1 <sup>1</sup> / <sub>4</sub> 802 (800-1 <sup>1</sup> / <sub>4</sub> )	2940-2 <sup>1</sup> / <sub>2</sub> 802 (800-2 <sup>1</sup> / <sub>2</sub> )	NA
CIRCLING	2980-1 <sup>1</sup> / <sub>4</sub> 777 (800-1 <sup>1</sup> / <sub>4</sub> )	3360-1 <sup>1</sup> / <sub>2</sub> 1157 (1200-1 <sup>1</sup> / <sub>2</sub> )	4000-3 1797 (1800-3)	NA

MIRL Rwy 9-27 and 15-33 0  
REIL Rwys 9, 15, 27 and 33

SW-4, 11 JUL 2024 to 08 AUG 2024

SW-4, 11 JUL 2024 to 08 AUG 2024