

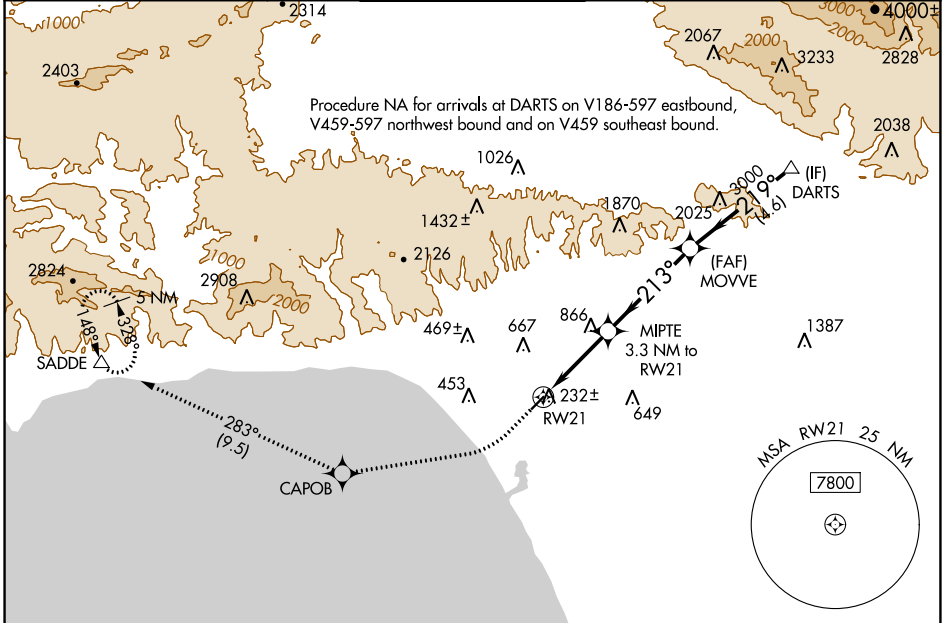
WAAS CH 90339 W21A	APP CRS 213°	Rwy ldg TDZE Apt Elev	3500 170 170
----------------------------------------	------------------------	-----------------------------	-----------------------------------------

RNAV (GPS) RWY 21

SANTA MONICA MUNI (SMO)

RNP APCH.	MISSED APPROACH: Climb to 600 then climbing right turn to 5000 direct CAPOB and on track 283° to SADDE and hold, continue climb-in-hold to 5000.
<p>▼ For uncompensated Baro-VNAV systems, LNAV/VNAV NA below 5°C (41°F) or above 14°C (58°F). Rwy 21 helicopter visibility reduction below 1 SM NA.</p>	

ATIS 119.15	SOCAL APP CON 135.05 317.5	SANTA MONICA TOWER * 120.1 (CTAF) 257.8	GND CON 121.9	UNICOM 122.95
-----------------------	--------------------------------------	----------------------------------------------------------	-------------------------	-------------------------

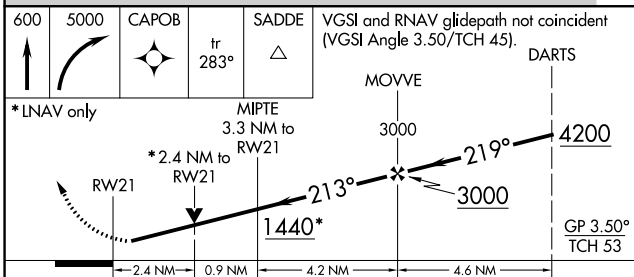


SW-3, 11 JUL 2024 to 08 AUG 2024

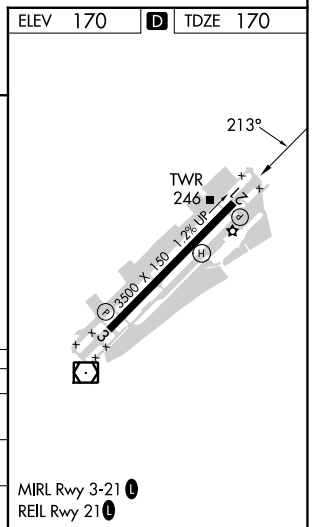
SW-3, 11 JUL 2024 to 08 AUG 2024

ELEV 170	D TDZE 170
----------	-------------------

RADAR REQUIRED



CATEGORY	A	B	C	D
LPV DA	440-1	270 (300-1)		
LNAV/VNAV DA	685-1 3/8	515 (600-1 3/8)		
LNAV MDA	1120-1 1/4	950 (1000-1 1/4)	1120-2 1/2	950 (1000-2 1/2)



MIRL Rwy 3-21 **1**
REIL Rwy 21 **1**