

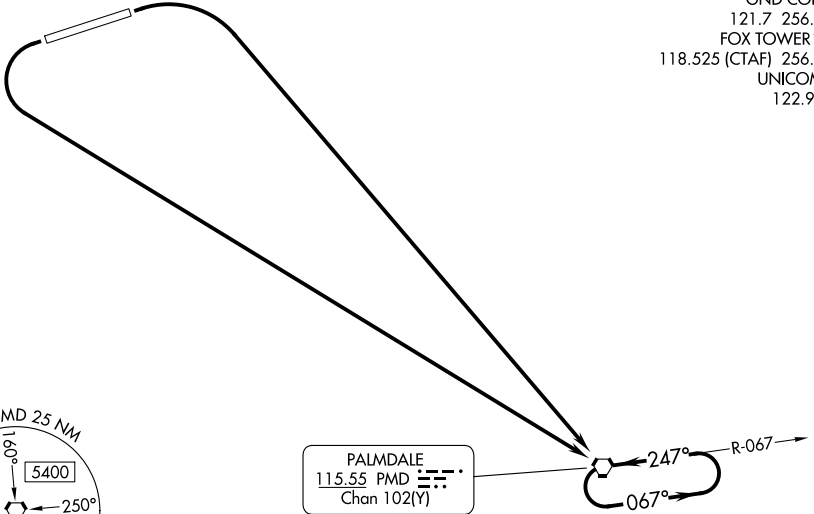
(PMD1.PMD) 23278

AL-5065 (FAA)

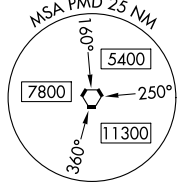
# PALMDALE ONE DEPARTURE (OBSTACLE)

GENERAL WM J FOX AIRFIELD (WJF)  
LANCASTER, CALIFORNIA

JOSHUA DEP CON  
126.1 290.3  
WJF ATIS  
126.3  
PMD ATIS  
118.275  
GND CON  
121.7 256.9  
FOX TOWER \*  
118.525 (CTAF) 256.9  
UNICOM  
122.95



PALMDALE  
115.55 PMD  
Chan 102(Y)



### TAKEOFF MINIMUMS

Rwy 6: Standard with minimum climb of 240' per NM to 4800,  
or 3700-3 for climb in visual conditions.  
Rwy 24: Standard with minimum climb of 351' per NM to 4800,  
or 3700-3 for climb in visual conditions.

### TAKEOFF OBSTACLE NOTES

Rwy 6: Trees beginning 1169' from DER, 590' right of centerline, up to 2374' MSL.

NOTE: Chart not to scale.

### DEPARTURE ROUTE DESCRIPTION

TAKEOFF RUNWAY 6: Climbing right turn direct PMD VORTAC and hold, thence. . . .

TAKEOFF RUNWAY 24: Climbing left turn direct PMD VORTAC and hold, thence. . . .

. . . .continue climb-in-hold to cross PMD VORTAC at or above MCA/MEA for route of flight.

VCOA ALL RUNWAYS: Obtain ATC approval for VCOA when requesting IFR clearance.  
Climb in visual conditions to cross General WM J Fox Airfield at or above 5900 before  
proceeding on course.

# PALMDALE ONE DEPARTURE (OBSTACLE)

(PMD1.PMD) 05OCT23

LANCASTER, CALIFORNIA  
GENERAL WM J FOX AIRFIELD (WJF)

SW-3, 11 JUL 2024 to 08 AUG 2024

SW-3, 11 JUL 2024 to 08 AUG 2024