

# TACAN RWY 30

TACAN NSI Chan <b>39</b>	APCH CRS <b>292°</b>	Rwy ldg TDZE Arprt Elev <b>10,002</b> <b>506</b> <b>506</b>
-----------------------------	-------------------------	--

AL-51 62 [USN]

SAN NICOLAS ISLAND NOLF (KNSI)

RADAR required.

MISSED APPROACH: Climbing right turn to 3000, intcp the NSI TACAN R-003 to FOBDA and hold.

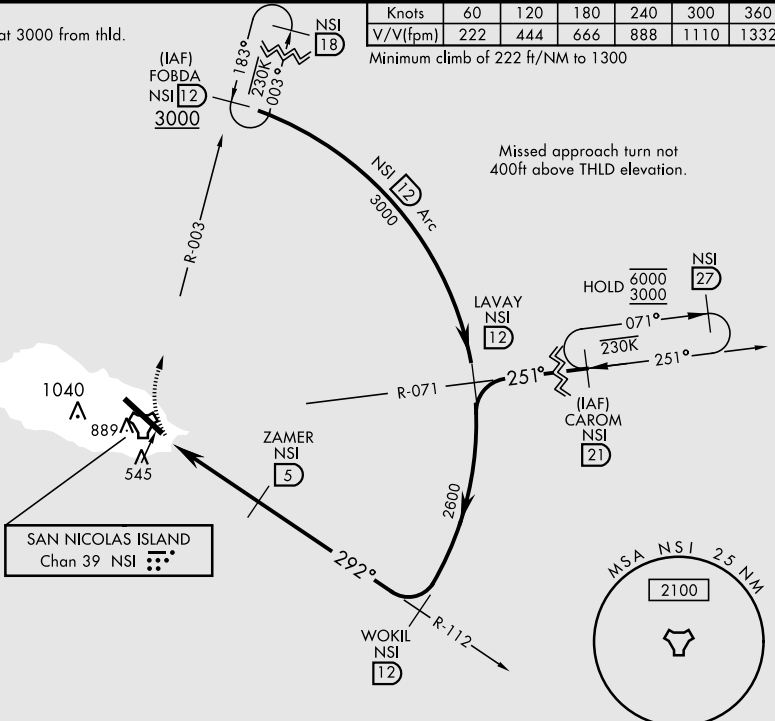
\*Circling not authorized W of Rwy 12-30.

TOWER ★  
**126.85 379.3**

CAUTION:  
FAC 258° from RCL at 3000 from thld.

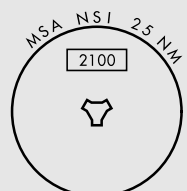
Knots	60	120	180	240	300	360
V/V(fpm)	222	444	666	888	1110	1332

Minimum climb of 222 ft/NM to 1300



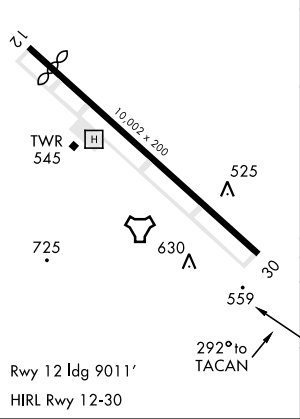
Missed approach turn not 400ft above THLD elevation.

SAN NICOLAS ISLAND  
Chan 39 NSI



ELEV 506	TDZE 506
----------	----------

EMERG SAFE ALT 100 NM 10,900



3000 NSI R-003	FOBDA NSI 12	WOKIL R-112 NSI 12	LAVAY R-071 NSI 12	CAROM R-071 NSI 21	
TACAN ZAPSU NSI 1.5		ZAMER NSI 5	2600	251° 3000	
0.8		3.5 NM		2.72° TCH 50	
CATEGORY	A	B	C	D	E
S-30	820-1		314	(400-1)	
CIRCLING*	860-1 354 (400-1)	960-1 454 (500-1)	960-1½ 454 (500-1½)	1060-2 554 (600-2)	

# TACAN RWY 30

SW-3, 11 JUL 2024 to 08 AUG 2024

SW-3, 11 JUL 2024 to 08 AUG 2024